



Turbograss

480

700

900



CATALOGO PARTI DI RICAMBIO
CATALOGUE PIECES DETACHEES
ERSATZTEILKATALOG
PARTS MANUAL

01. 2000



LEGENDA

B	Per motorizzazione benzina	For B. & S. engine machines	Pour machines avec moteur B. & S.	Für Maschinen mit B.&S. Motor
D	Per motorizzazione KUBOTA	For KUBOTA engine machines	Pour machines avec moteur KUBOTA	Für Maschinen mit KUBOTA Motor
D6	Per motorizzazione KUBOTA 600	For KUBOTA 600 engine machines	Pour machines avec moteur KUBOTA 600	Für Maschinen mit KUBOTA 600 Motor
D7	Per motorizzazione KUBOTA 700	For KUBOTA 700 engine machines	Pour machines avec moteur KUBOTA 700	Für Maschinen mit KUBOTA 700 Motor
L	Per motorizzazione LOMBARDINI	For LOMBARDINI engine machines	Pour machines avec moteur LOMBARDINI	Für Maschinen mit LOMBARDINI Motor
3	Per contenitore 400 lt	For 400 lt collector	Pour bac 400 lt	Für 400 Lt. Behälter
3a	Per contenitore 450 lt	For 450 lt collector	Pour bac 450 lt	Für 450 Lt. Behälter
4	Per contenitore 450 lt	For 450 lt collector	Pour bac 450 lt	Für 450 Lt. Behälter
6	Per contenitore 650 lt	For 650 lt collector	Pour bac 650 lt	Für 650 Lt. Behälter
TB1	Per ruote 18" o 20" ras. 110	For 18" or 20" wheels deck 110	Pour roues 18" ou 20" tond. 110	Für Räder 18" oder 20" - Mähwerk 110
TA1	Per ruote 23" ras. 110	For 23" wheels deck 110	Pour roues 23" tond. 110	Für Räder 23" - Mähwerk 110
T3	Per ras. 130	For deck 130	Pour tondeuse 130	Für Mähwerk 130
F	Con freno	For machine with brake	Pour machines avec frein	Für Maschinen mit Bremse
A	Per ruote 23"	For 23" wheels	Pour roues 23"	Für Räder 23"
dx	Destro	Right	Droit	Recht
sx	Sinistro	Left	Gauche	Link
C	Centrale	Central	Central	Zentral
a	BRIGGS e KUBOTA fino a 9657200	BRIGGS e KUBOTA up to 9657200	BRIGGS e KUBOTA jusqu'à 9657200	BRIGGS und KUBOTA bis 9657200
b	LOMBARDINI e KUBOTA da 9658001	LOMBARDINI and KUBOTA from 9658001	LOMBARDINI e KUBOTA de 9658001	LOMBARDINI und KUBOTA von 9658001
ml	Metro lineare	Meter	Metre	Meter
S	Versione stradale	Road traffic version	Variante trafic routier	Straßenausführung
R	Da Mat. N° 9658051	Serial from NR 9658051	De NR 9658051	Ab kenn-Nr. 9658051
★	Versione precedente	Former series	Modele precedent	Vorige Ausführung
SL	GF versione stradale da N° 9754051	GF road from NR 9754051	GF routier de NR 9754051	Straßenausführung Ab kenn-Nr 9754051
V	Ventoline maggiorate da N° D. 56070	Fan oversized from NR D. 56070	Ventilateur majoré de NR D. 56070	Erhöhte Flügelräder Ab kenn-Nr D. 56070

W RUOTE / WHEELS / ROUES / RÄDER



ANTERIORI / FRONT / AVANT / VORDERRÄDER							
18	850	8	4 PR GARDEN	72.0040	59.0030	16.0080	5901.0030
20	1000	8	4 PR GARDEN	72.0150	59.0070	16.0080	5901.0070
23	850	12	4 PR GARDEN	72.0060	59.0040	16.0120	5901.0040
23	1050	12	4 PR GARDEN	72.0062	59.0080	16.0121	-
21	1100	8	TRACTOR	72.0160	59.0050	16.0080	5901.0050
POSTERIORI / REAR / ARRIER / VHINTERRÄDER							
15	600	6	6 PR	72.0140	59.0009	16.0050	5901.0009
16	650	8	4 PR	72.0131	59.0020	16.0060	5901.0020
RASAERBA / DECK / TONDEUSE / MÄHWERK							
3"			6 PR	72.0200	59.0005	16.0040	5901.0005

TAV - 1a, TAV - 1b, TAV - 1c. FRAME OPBOUW 480 BODY ASSEMBLY - CHASSIS 700 CAPOT - CHASSIS 900 CHASSIS	TAV - 12a. LOMBARDINI DIESEL MOTOR LOMBARDINI ENGINE - DIESEL 900 MOTEUR DIESEL LOMBARDINI DIESELMOTOR LOMBARDINI
TAV - 1d. FRAME OPBOUW DIESEL BODY ASSEMBLY - DIESEL 700 CAPOT - DIESEL 900 DIESELCHASSIS	TAV - 13. HYDRAULIEK FRONTHEF 480 HYDRAULIC FRONT LIFT 700 RELEVAGE HYDRAULIQUEU FRONTAL 900 HYDR. FRONTHEBEVORRICHTUNG
TAV - 02. BEDIENINGS DELEN 480 DRIVE STEERING CONTROL 700 COMMANDES 900 ANTRIEBSBEDIENUNG	TAV - 14/96. FRAME DIESEL UITVOERING CHASSIS DIESEL ASSEMBLY 700 CHASSIS VERSION DIESEL 900 CHASSIS VERSION DIESEL
TAV - 2a. V-SNAAR AANDR.(DUBBEL) 700 DOUBLE BELT DRIVE 900 TRANSMISSION A DOUBLE COURROIE DOPPELRIEMENANTRIEB	TAV - 16/95. HOOGKIEPER 480 COLLECTOR DUMP 700 BASCULEMENT DU BAC 900 KIPPVORRICHTUNG GRASBEHALTER
TAV - 03. KOPPELING D.P.D. 480 CLUTCH CONTROL ASSEMBLE 700 EMBRAYAGE P.D.F. 900 EINSCHALTKUPPLUNG MAHERGERAT	TAV - 19. HYDRAULIEK HOOGKIEPER HYDRAULIC HIGH DIMP ELEVATOR 700 ELEVATION DU BAC RECUPERATEUR 900 HYDRAULISCHE HOCHENTLEERUNG
TAV - 04. BLOWER 480 BLOWER ASSEMBLY 700 TURBINE 900 GEBLAESE	TAV - 23. ELECTRISCH (Weguitvoering) ROAD VERSION 700 VERSION DE ROUTE 900 STRASSEN AUSFUHRUNG
TAV - 05/95. GRAS CONTAINER 480 GRASS COLLECTOR 700 BAC RECUPERATEUR 900 GRASBEHALTER	
TAV - 06/95. WIELAS VOOR 480 GEAR - DRIVE AXLE 700 BOITIER REDUCTEURS DE ROUES 900 ACHSENTERSETZUN	
TAV - 07. HAAKSE OVERBRENGING 480 RIGHT ANGLE GEARBOX 700 BOITER RENVOI D'ANGLE 900 WINKELGETRIEBE	
TAV - 11. BENZINE MOTOR ENGINE-PETROL 480 MOTEUR ESSENCE BENZINMOTOR	
TAV - 12. KUBOTA DIESEL MOTOR KUBOTA ENGINE - DIESEL 700 MOTEUR DIESEL KUBOTA DIESELMOTOR KUBOTA	



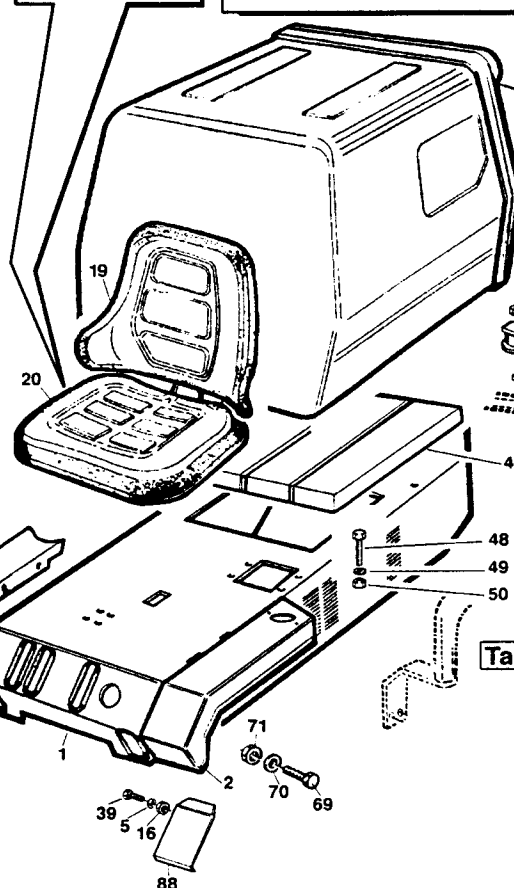
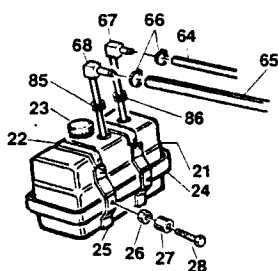
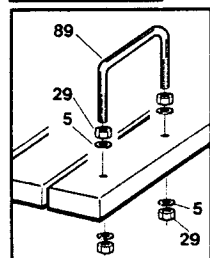
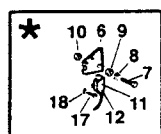
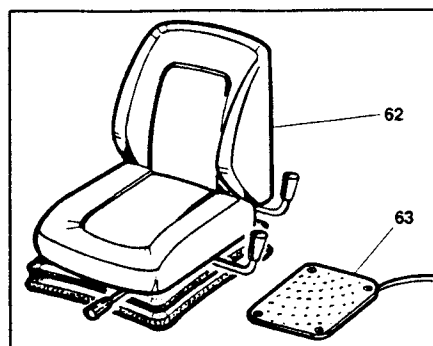
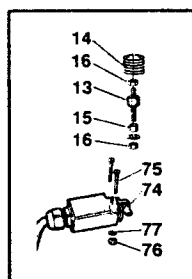
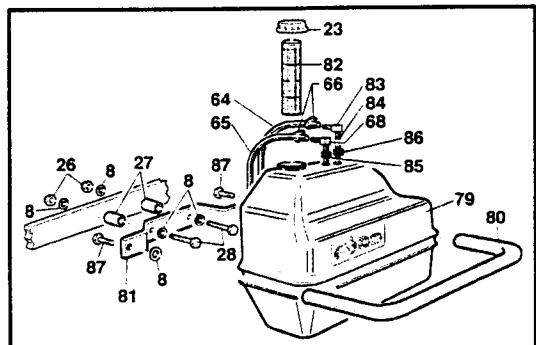
Tav.1a

480

700

900

01/12/99



Tav. 5/95

Tav. 16/95

Tav. 7

Tav. 4

REF.	LEG.	CODE	Q.TY
1	B	01.50F00.1020	1
2		01.50F00.1191	1
3		01.50F00.1203	1
4		00.92.05.1040	8
5		00.68.02.0050	20
8		00.68.01.0040	6
13		00.74.03.0080	4
14		00.47.00.0120	2
15		01.40.00.0491	2
16		00.26.04.0060	6
19		00.73.00.0012	1
20		00.73.00.0011	1
21		00.75.00.0010	1
22		01.50.00.1150	2
23		00.75.00.0012	1
24		01.50Z00.0530	1
25		01.50.00.0820	2
26		00.26.01.0080	2
27		01.40.00.1120	2
28		00.92.06.1090	2
29		00.26.02.0060	9
30		01.50.00.1030	1
31		00.95.05.0040	1

REF.	LEG.	CODE	Q.TY
32		00.26.04.0040	2
33		00.68.01.0020	2
34	B	01.50.00.1070	1
35	B	01.50.00.1080	2
37		00.07.02.0030	1
39		00.92.05.1070	5
41		00.68.01.0030	3
43		00.92.03.0040	4
44		00.68.01.0020	4
45		01.50N00.1173	1
46		01.90.00.0550	1
47		01.50F00.2510	1
48		00.92.05.0060	5
49		00.68.02.0050	4
50		00.26.04.0060	4
51		01.50.00.1930	1
59		00.40.00.0041	1
60		00.26.01.0030	2
61		00.91.05.0100	2
62		00.73.00.0020	1
63		00.40.00.0560	1
64		00.89.00.1000	1,3
65		00.89.02.0000	1,64

REF.	LEG.	CODE	Q.TY
66		00.29.02.0016	4
67		00.75.00.0015	1
68		00.75.00.0017	1
69		00.92.07.0101	2
70		00.68.01.0050	2
71		00.26.03.0090	2
72		01.50.00.4620	1
73		01.50.00.4621	1
74		00.40.00.0750	1
75		00.91.04.0100	2
76		00.26.04.0020	2
77		00.68.01.0009	4
78		00.09.00.0020	1
79		00.75.00.0050	1
80		01.50F00.4660	1
81		01.50F00.4650	1
82		00.75.00.0013	1
83		00.75.00.0052	1
84		00.75.00.0019	1
85		00.75.00.0014	1
86		00.75.00.0016	1
87		00.92.06.1120	2
88		01.50.00.1931	1
89		01.50Z00.7220	2



Tav.1b

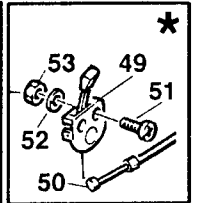
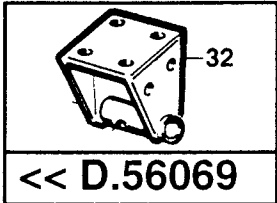
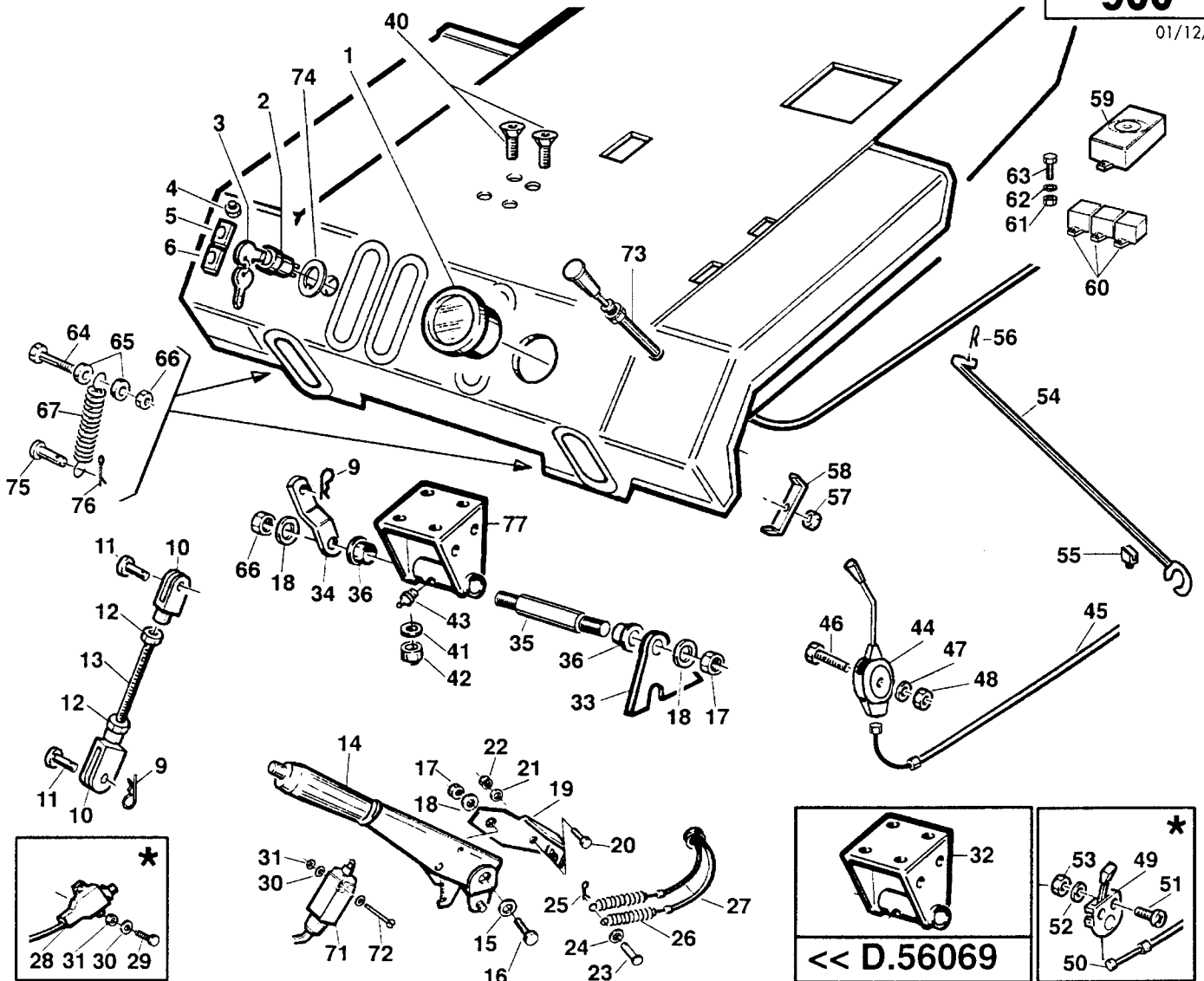
480

700

900

01/12/99

Tav. 1a



<< D.56069

REF.	LEG.	CODE	Q.TY
1		00.40.00.0100	1
2	B	00.40.00.0080	1
2	D7	00.55.01.0080	1
3	B	00.40.00.0090	1
3	D7	00.55.01.0170	1
4		00.40.00.0180	1
5	D	00.40.00.0190	1
6	D	00.40.00.0200	1
9		00.18.04.0021	2
10		00.33.02.0020	2
11		00.33.02.0022	2
12		00.26.02.0060	2
13		01.50.00.0270	1
14		00.25.02.0010	1
15		01.40.00.0830	1
16		00.92.06.0110	1
17		00.26.04.0070	2
18		00.68.01.0040	4
19		01.50Z00.2380	1
20		00.92.03.1050	1
21		00.68.01.0020	2
22		00.26.04.0040	1

REF.	LEG.	CODE	Q.TY
23		00.33.02.0022	1
24		00.68.02.0050	1
25		00.18.04.0021	1
26		00.47.00.0170	2
27		00.25.01.0040	2
30		00.68.01.0010	2
31		00.26.04.0030	2
32	V	01.50.00.0302	1
33		01.50.00.0306	1
34		01.50.00.0304	1
35		01.40.00.0262	1
36		01.30.00.0010	2
40		00.95.05.0060	4
41		00.68.01.0030	4
42		00.26.04.0060	4
43		00.42.00.0010	1
44		00.25.00.0030	1
45	B	00.25.01.0010	1
45	D7	00.25.01.0030	1
45	L	00.25.01.0050	1
46		00.95.04.0060	2
47		00.68.01.0020	2

REF.	LEG.	CODE	Q.TY
48		00.26.04.0040	2
54		01.50.00.0490	1
55		00.99.00.0030	1
56		00.18.04.0021	1
57		00.40.00.0110	1
58		00.40.00.0120	1
59		00.40.00.0220	1
60	B	00.40.00.0160	3
61		00.26.04.0030	5
62		00.68.01.0010	5
63		00.91.05.0070	5
64		00.92.06.0140	2
65		01.50.00.0770	4
66		00.26.01.0080	3
67		00.47.00.0090	2
71		00.40.00.0731	1
72		00.91.04.0100	2
73	B	00.25.01.0070	1
74	D7	01.50.00.6500	1
75		00.33.03.0022	2
76	V	00.18.04.0043	2
77	V	01.50Z00.7140	1



Tav.1c

480

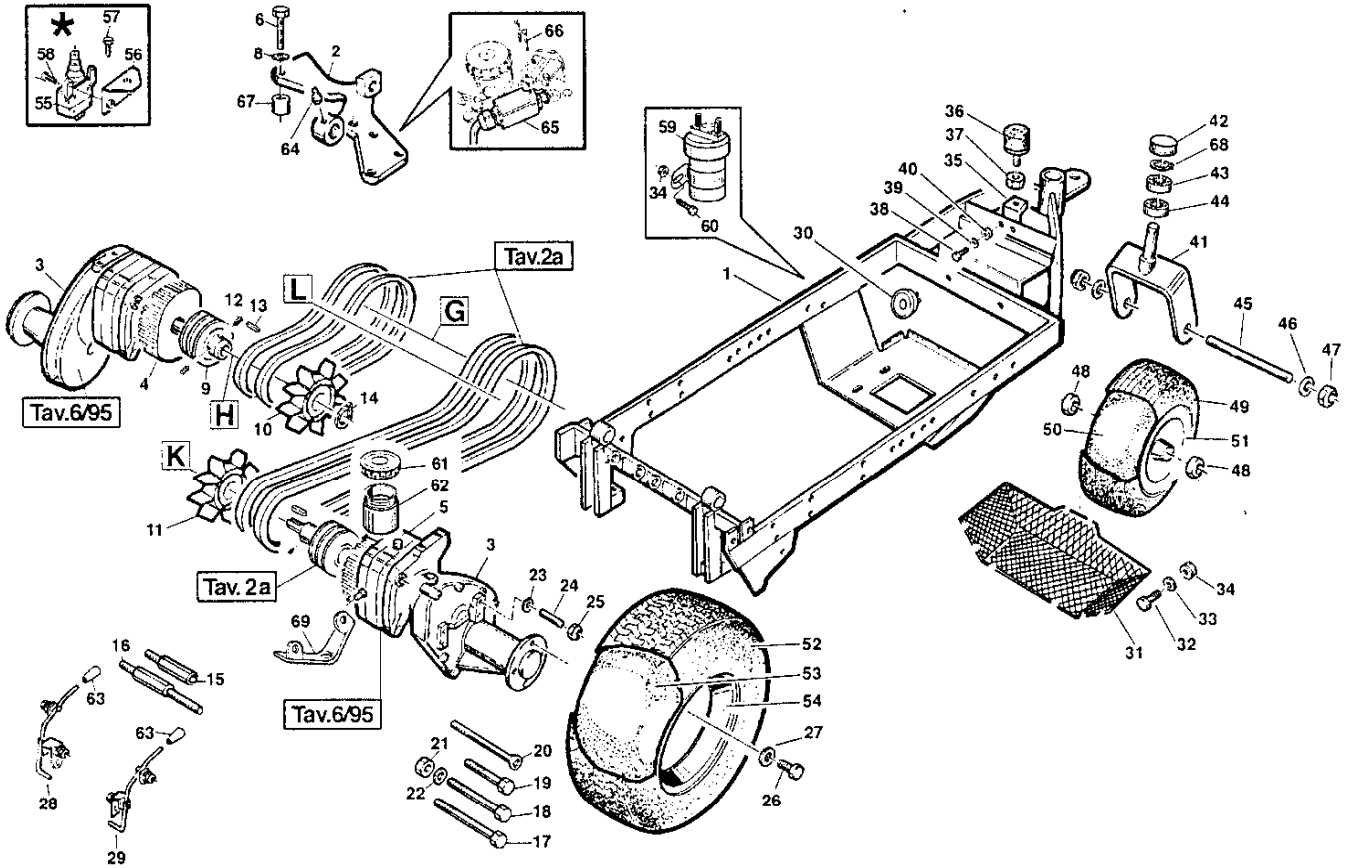
700

900

01/12/99

Tav. 14/96

Tav. 2a



REF.	LEG.	CODE	Q.TY
1	B	01.50N00.1050	1
2		01.50Z00.0110	1
3		01.90.00.0450	2
4		00.54.00.1020	1
5		00.54.00.1010	1
6		00.92.06.0110	4
8		00.68.01.0040	7
9		00.61.00.0250	2
10		01.30.00.0130	1
10	V	01.30.00.0132	1
11		01.30.00.0131	1
11	V	01.30.00.0133	1
12		00.96.05.0010	4
13		00.43.10.0020	2
14		00.03.00.0310	2
15		01.50.00.1452	1
16		01.50.00.1451	1
17		00.92.06.0210	1
18		00.92.06.0190	2
19		00.92.06.0160	3
20		00.95.06.0160	1
21		00.26.02.0080	3

REF.	LEG.	CODE	Q.TY
22		00.68.02.0070	8
23		00.68.01.0040	8
24		00.60.03.0080	8
25		00.26.04.0070	8
26		00.92.07.3050	8
27		00.68.01.0050	8
28		01.50.00.0280	1
29		01.50.00.1540	1
30		00.40.00.0240	1
31		01.50N00.3200	1
32		00.92.05.0080	4
33		00.68.01.0030	8
34		00.26.04.0060	6
35		01.50N00.3340	1
36		00.74.01.0090	1
37		00.26.02.0080	1
38		00.92.06.0090	2
39		00.68.01.0040	4
40		00.26.04.0070	2
41		01.50N00.1041	1
42		00.07.06.0020	1
43		00.22.00.0270	1

REF.	LEG.	CODE	Q.TY
44		00.22.00.0222	1
45		01.40.00.0470	1
46		00.68.01.0065	4
47		00.26.04.1090	2
48		00.22.15.4201	2
49		W	1
50		W	1
51		W	1
52		W	2
53		W	2
54		W	2
59		00.40.00.0161	1
60		00.92.05.1110	2
61		00.55.03.0010	2
62		00.55.03.0020	2
63		00.07.03.0010	2
64		00.42.00.0010	1
65		00.40.00.0740	1
66		00.91.04.0120	2
67		01.50.00.0770	4
68		00.03.10.0025	1
69		01.50.00.7150	1



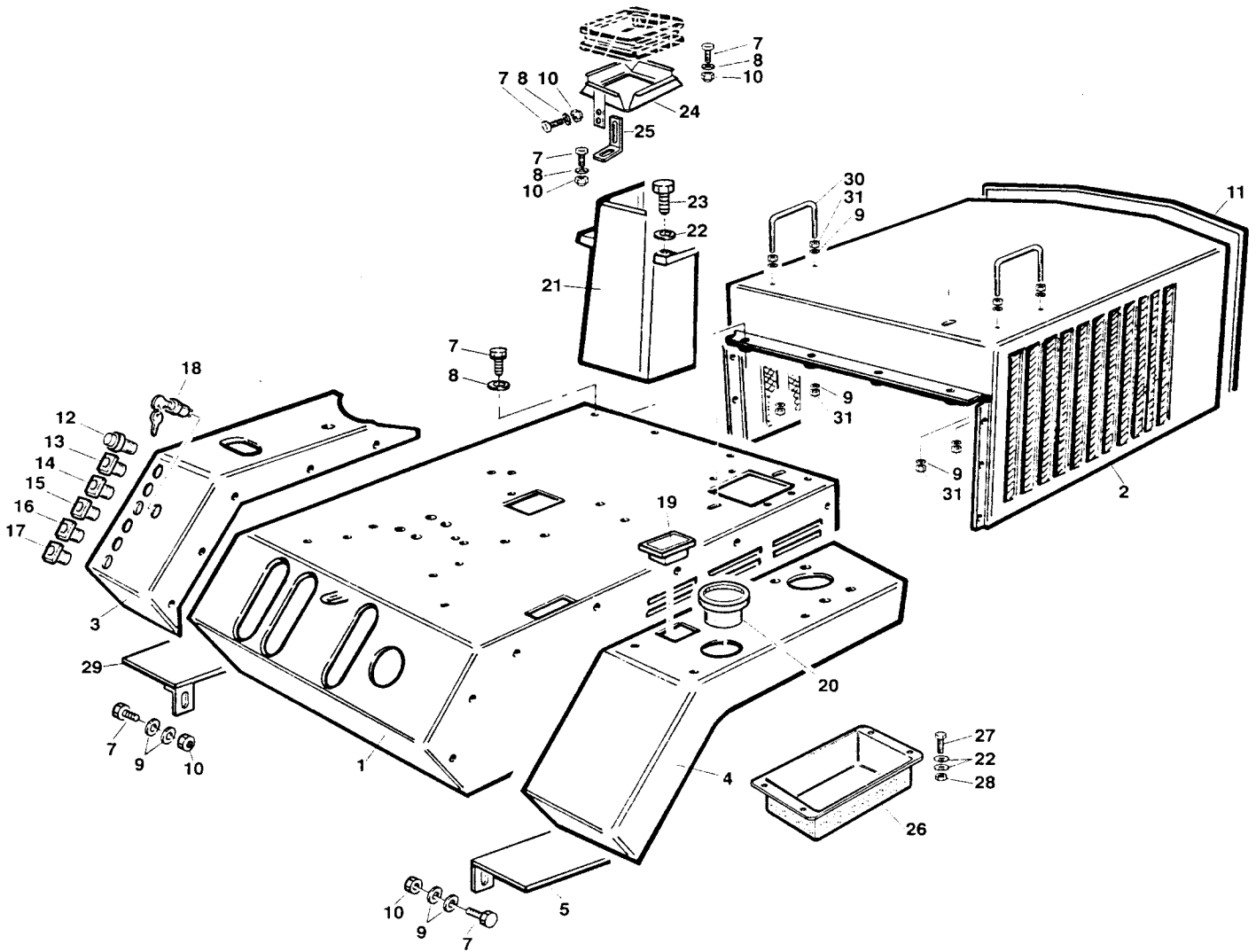
Tav.1d

700

900

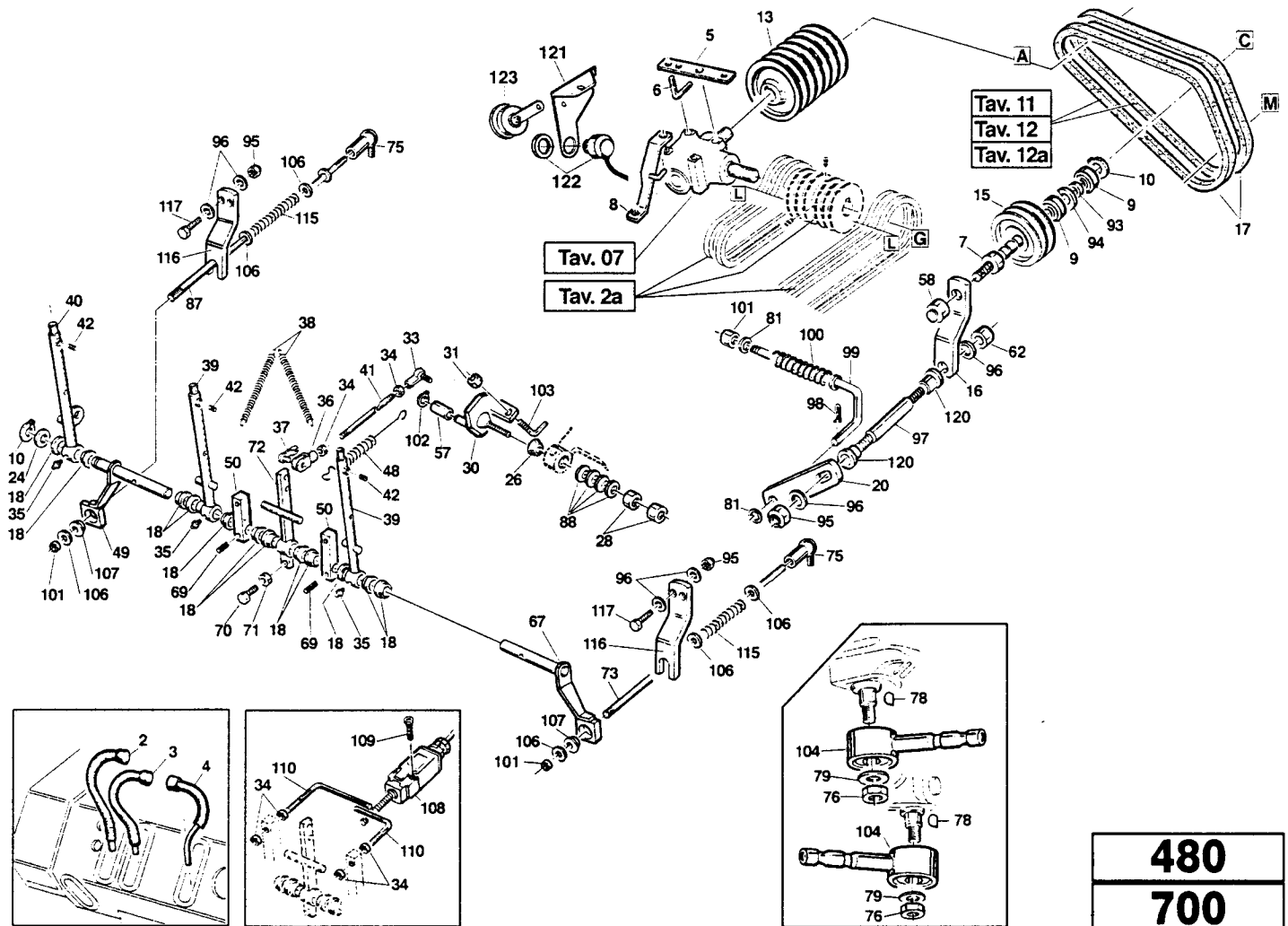
Tav. 1b

01/12/99



REF.	LEG.	CODE	Q.TY
1		01.50.00.4020	1
2		01.50.00.4030	1
3		01.50F00.1203	1
4		01.50F00.1191	1
5		01.50.00.1931	1
7		00.92.05.1070	14
8		00.68.01.0030	8
9		00.68.02.0050	12
10		00.26.04.0060	4
11		00.11.01.1000	1,1
12		00.40.00.0180	1
13		00.40.00.0190	1
14		00.40.00.0200	1
15		00.40.00.0210	1
16		00.40.00.0630	1
17		00.40.00.0640	1

REF.	LEG.	CODE	Q.TY
18	L	00.40.00.0081	1
18	D7	00.55.01.0080	1
19		00.40.00.0130	1
20		00.40.00.0390	1
21		01.50.00.3760	1
22		00.68.01.0020	16
23		00.92.01.1040	4
24		01.50.00.4620	1
25		01.50.00.4621	1
26		00.40.00.0680	1
27		00.92.03.1070	4
28		00.26.04.0040	4
29		01.50.00.1930	1
30		01.50Z00.7220	2
31		00.26.02.0060	8

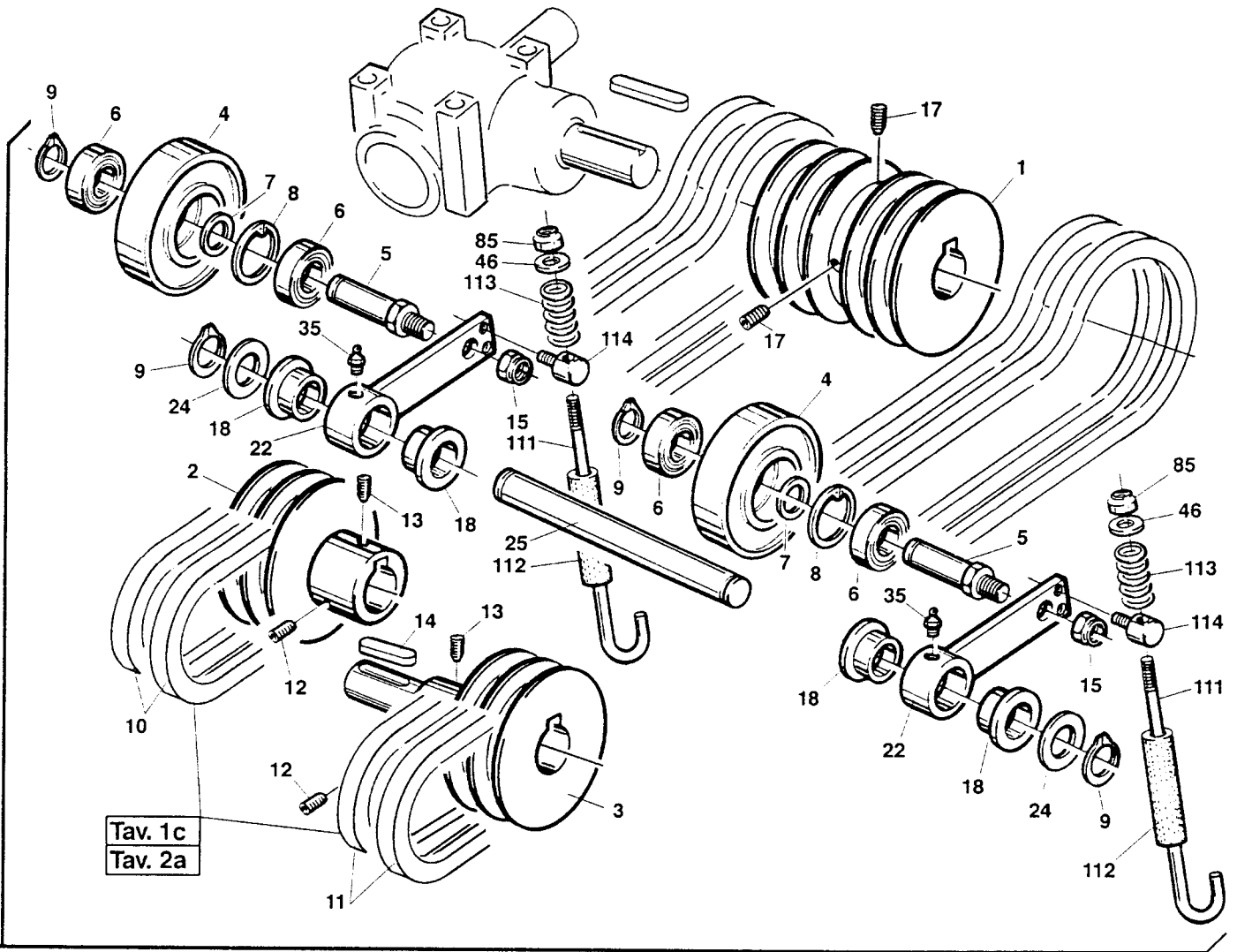


480
700
900

REF.	LEG.	CODE	Q.TY
2		01.50.00.0571	1
3		01.50.00.0041	1
4		01.50.00.0042	1
5		01.50Z00.2030	1
6		01.50.00.2040	2
7		01.40.00.0231	1
8		01.50.00.0500	1
9		00.22.00.0100	2
10		00.03.00.0110	4
13		00.61.00.0192	1
15		00.61.00.0160	1
16		01.50.00.0193	1
17		00.17.01.0020	2
18		01.30.00.0010	12
20		01.50.00.0192	1
24		00.68.01.0065	3
26		01.20.00.0010	1
28		00.26.01.2080	2
30		01.50.00.0121	1
31		00.26.01.0040	1
33		00.78.00.0010	1
34		00.26.02.0040	6
35		00.42.00.0010	4
36		00.33.01.0020	1
37		00.33.01.0021	1

REF.	LEG.	CODE	Q.TY
38		00.47.00.0040	2
39		01.50.00.0331	2
40		01.50.00.0332	1
41		01.50.00.0230	1
42		00.96.04.0020	3
48		00.47.00.0010	1
49		01.50.00.0310	1
50		01.50.00.0100	2
57		01.40.00.0291	1
58		00.26.03.0090	3
62		00.26.03.0080	2
67		01.50.00.0311	1
69		00.83.12.1030	2
70		00.92.05.1080	1
71		00.26.01.0060	1
72		01.50.00.0050	1
73		01.50.00.0200	1
75		00.78.00.0020	2
76		00.26.06.0030	2
78		00.43.10.0010	2
79		00.68.01.0040	2
81		00.68.01.0030	2
87		01.50.00.0210	1
88		00.48.00.0112	4
93		01.40.00.1090	1

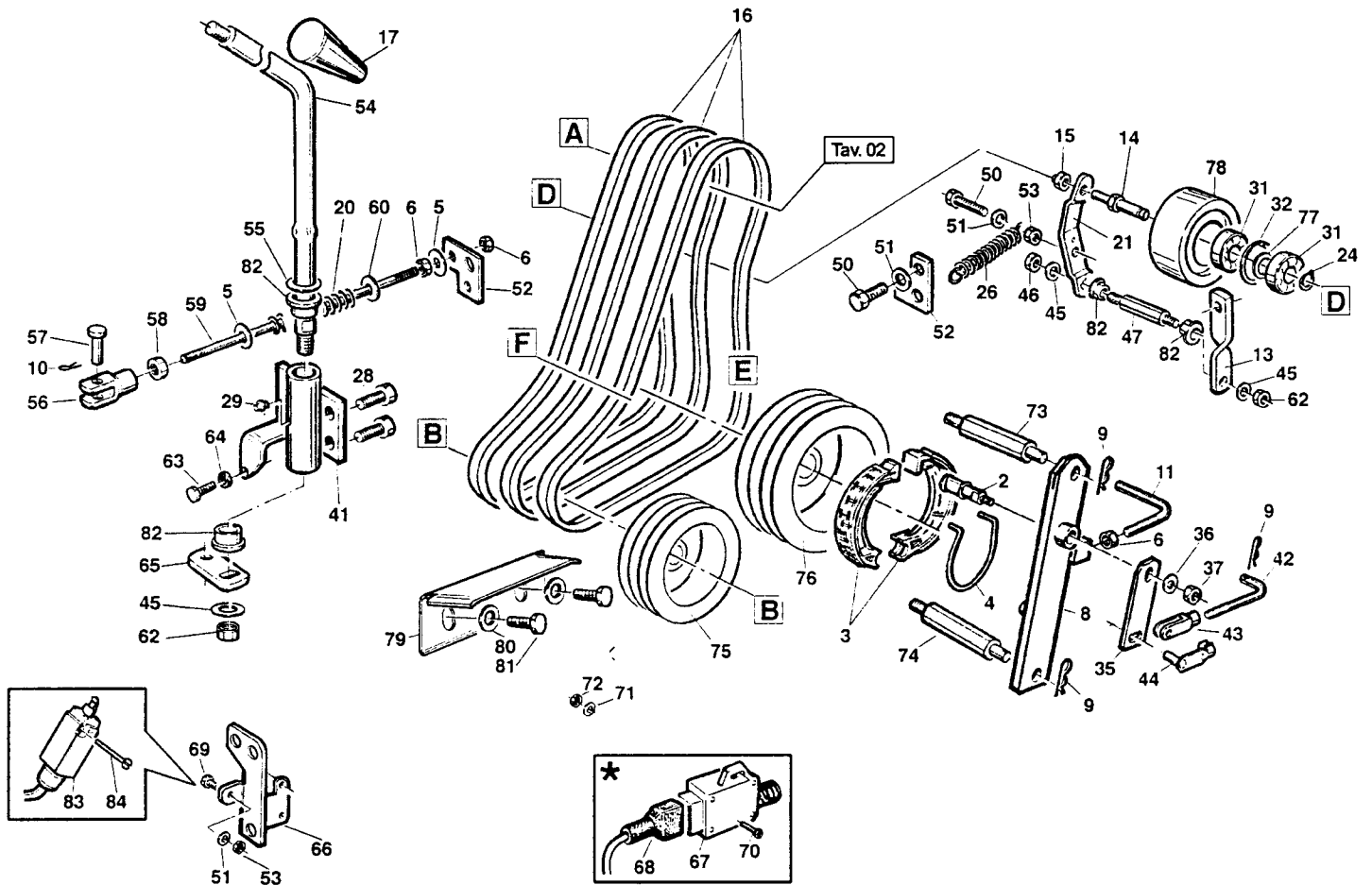
REF.	LEG.	CODE	Q.TY
94		00.03.01.0160	1
95		00.26.04.0070	3
96		00.68.01.0040	6
97		01.40.00.0261	1
98		00.18.04.0052	1
99		01.50.00.3590	1
100		00.47.00.0101	1
101		00.26.04.0060	3
102		00.03.00.0060	1
103		01.50.00.3610	1
104		01.50.00.0142	2
106		00.68.02.0050	6
107		01.20.00.0030	2
108		00.40.00.0041	1
109		00.90.03.0120	2
110		01.50.00.3480	2
115		00.47.00.0200	2
116		01.50Z00.3980	2
117		00.92.06.0110	2
120		01.20.00.0050	2
121		01.50.00.4700	1
122	S	00.40.00.0221	1
123	S	00.40.00.0241	1



91

REF.	LEG.	CODE	Q.TY
1		00.61.00.0240	1
2		00.61.00.0250	1
3		00.61.00.0260	1
4		00.61.00.0270	2
5		01.40.00.0231	2
6		00.22.00.0100	4
7		01.40.00.1090	2
8		00.03.00.0160	2
9		00.03.00.0110	4
10		00.17.04.0180	2
11		00.17.04.0390	2
12		00.96.05.0010	2
13		00.96.05.0008	2
14		00.43.00.0110	1

REF.	LEG.	CODE	Q.TY
15		00.26.03.0090	2
17		00.96.05.0030	2
18		01.30.00.0010	4
22		01.50.00.0172	2
24		00.68.01.0065	2
25		01.40.00.0250	1
35		00.42.00.0010	2
46		00.68.01.0020	2
85		00.26.04.0040	2
91		97.00.00.0316	1
111		01.50.00.3970	2
112		00.89.01.0000	0,3
113		00.47.00.0180	2
114		01.40.00.1190	2



REF.	LEG.	CODE	Q.TY
2		00.34.01.0013	1
3		00.34.01.0010	2
4		00.34.01.0011	1
5		00.68.01.0030	2
6		00.26.02.0060	3
8		01.50.00.2710	1
9		00.18.00.1010	3
10		00.18.04.0021	1
11		01.50.00.2040	1
13		01.50.00.0154	1
14		01.50.00.1980	1
15		00.26.04.0080	1
16		00.17.01.1440	3
17		00.45.01.0010	1
20		00.47.00.0101	1
21		01.50.00.0153	1
24		00.03.00.0110	1
26		00.47.00.0050	1
28		00.92.06.0080	2
29		00.42.00.0010	1
31		00.22.00.0100	2

REF.	LEG.	CODE	Q.TY
32		00.03.01.0160	1
35		01.50.00.2820	1
36		00.68.02.0030	1
37		00.26.04.0040	1
41		01.50.00.5810	1
42		01.40.00.0820	1
43		00.33.01.0020	1
44		00.33.01.0021	1
45		00.68.01.0040	4
46		00.26.03.0080	1
47		01.40.00.0261	1
50		00.92.03.1070	2
51		00.68.01.0020	4
52		01.50Z00.2500	2
53		00.26.01.0040	3
54		01.50.00.2141	1
55		00.68.01.0065	1
56		00.33.02.0020	1
57		00.33.02.0022	1
58		00.26.04.0060	1
59		01.50.00.0271	1

REF.	LEG.	CODE	Q.TY
60		00.68.03.0040	1
62		00.26.04.0070	2
63		00.92.03.1060	1
64		00.26.02.0040	1
65		01.50.00.2201	1
66		01.50Z00.2010	1
69		00.92.03.1090	1
71		00.68.01.0009	4
72		00.26.04.0020	2
73		01.40.00.0811	1
74		01.40.00.0810	1
75		00.61.00.0183	1
76		00.61.00.0173	1
77		01.40.00.1090	1
78		00.61.00.0023	1
79		01.50.00.3740	1
80		00.68.01.0050	2
81		00.92.07.1010	2
82		01.20.00.0050	4
83		00.40.00.0043	1
84		00.91.04.0100	2



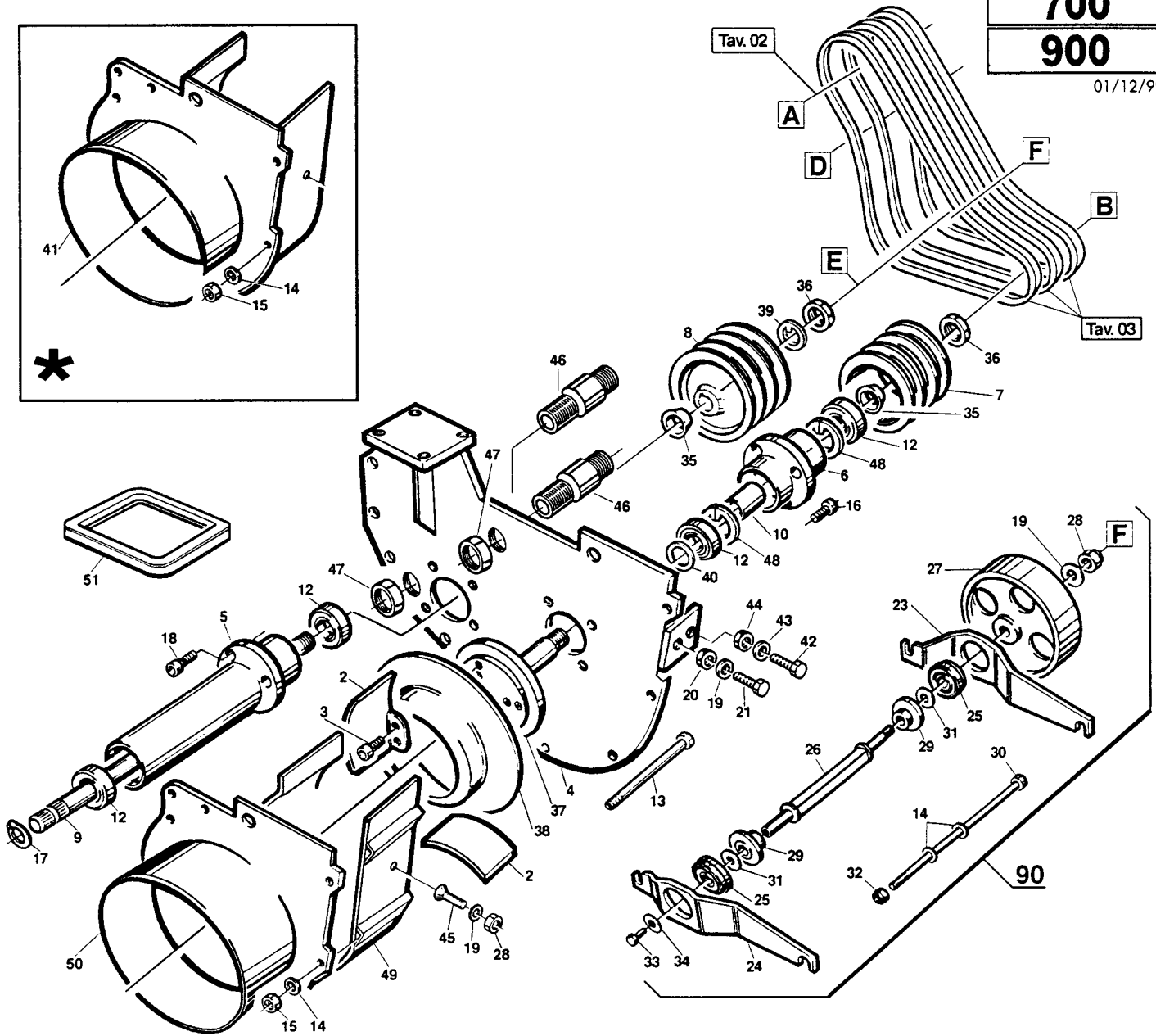
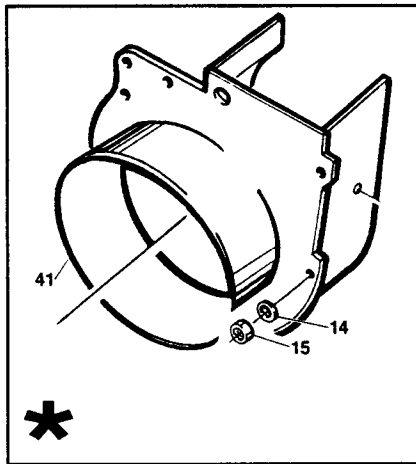
Tav. 04

480

700

900

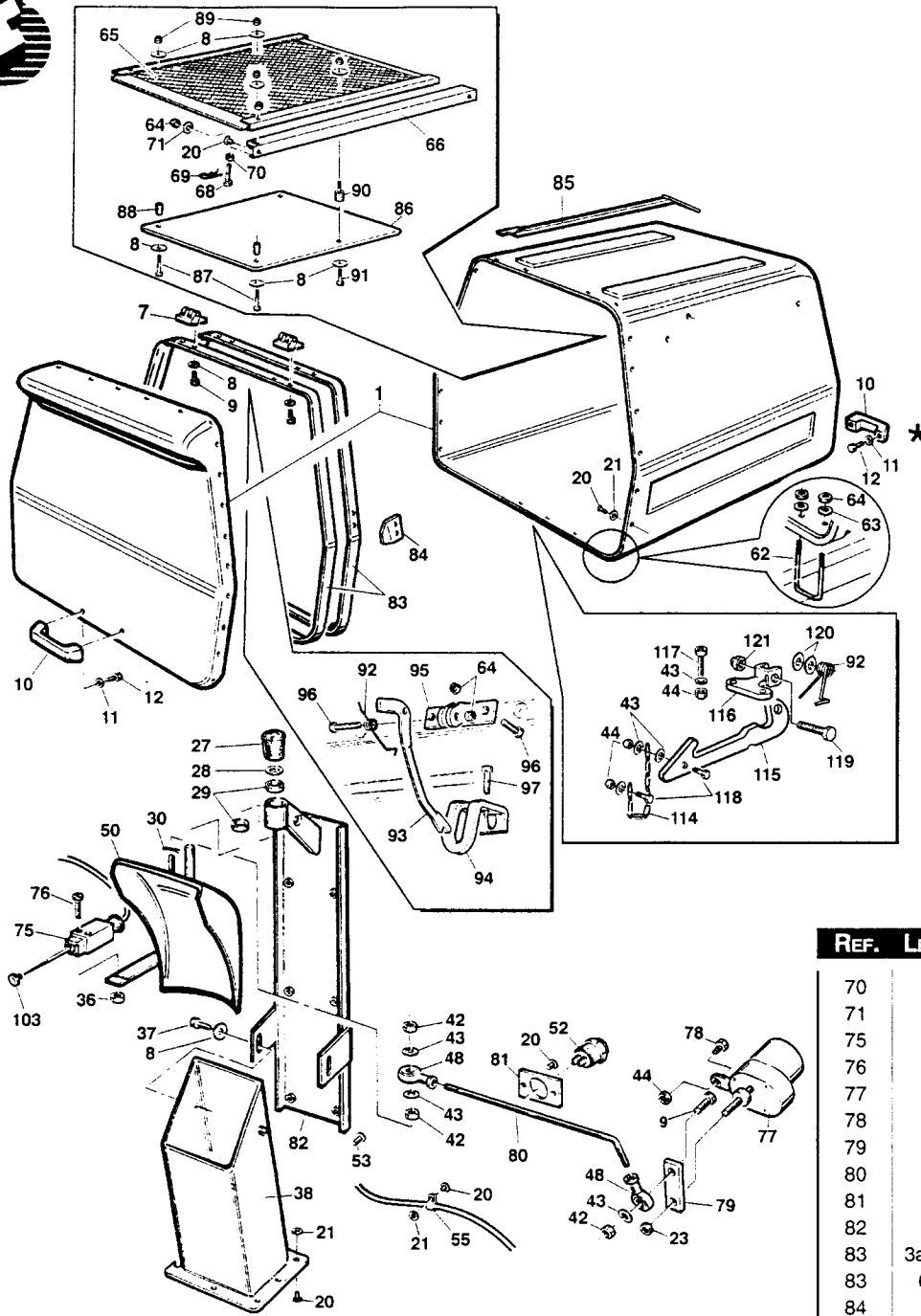
01/12/99



REF.	LEG.	CODE	Q.TY
2		01.50.00.2420	4
3		00.90.07.1060	8
4		01.50N00.0631	1
5		01.40N00.0041	1
6		01.40.00.0030	1
7		00.61.00.0183	1
8		00.61.00.0173	1
9		01.40.00.0021	1
10		01.40.00.0590	1
12		00.22.00.0230	4
13		00.92.05.0290	4
14		00.68.03.0040	10
15		00.26.01.0060	6
16		00.90.07.2050	4
17		00.03.00.0160	1
18		00.90.07.0060	4
19		00.68.01.0040	6

REF.	LEG.	CODE	Q.TY
20		00.26.02.0080	2
21		00.92.06.1080	4
23		01.50Z00.2700	1
24		01.50Z00.2701	1
25		00.22.00.0381	2
26		01.40.00.0558	1
27		01.15.00.0010	1
28		00.26.04.0070	2
29		01.40.00.0800	2
30		00.92.05.0295	2
31		00.68.10.0020	2
32		00.26.04.0060	2
33		00.92.03.1040	1
34		00.68.02.0030	1
35		01.40.00.0710	2
36		00.26.03.1130	2
37		01.40.00.0680	1

REF.	LEG.	CODE	Q.TY
38		01.50.00.2410	1
39		01.40.00.1050	1
40		01.40.00.1100	1
41		01.50N00.2102	1
42		00.92.07.0110	2
43		00.68.01.0050	4
44		00.26.04.0080	2
45		00.95.06.0090	1
46		01.40.00.1790	2
47		01.40.00.2090	2
48		00.03.01.0047	2
49		01.50.00.1996	1
50		01.50.00.2104	1
51		01.90.00.0550	1
90		01.90.00.0212	1



Tav. 05/95

570

630

700

900

TURBO 1

30/04/2000

REF.	LEG.	CODE	Q.TY
70		00.26.02.0060	3
71		00.68.03.0040	4
75		00.40.00.0042	1
76		00.91.04.0100	2
77		00.54.00.2020	1
78		00.92.03.1090	1
79		01.50Z00.3110	1
80		01.50.00.3130	1
81		01.50Z00.3310	1
82		01.50.00.3180	1
83	3a,4	01.50Z00.3900	1
83	6	01.50Z00.3910	1
84		01.50Z00.3911	2
85	3a	01.50Z00.3920	1
85	4,6	01.50Z00.3930	1
86	3a,4	01.50.00.4101	1
86	6	01.50.00.4100	1
87		00.92.03.1050	2
88		01.40.00.0490	2
89		00.26.04.0040	4
90		00.74.03.0050	2
91		00.92.03.1040	2
92		00.47.00.0190	2
93		01.50.00.3870	1
94		01.50Z00.3880	1
95		01.50Z00.3890	1
96		00.92.05.0130	2
97		00.92.05.1100	2
103		00.45.01.0040	1
114		01.50.00.0833	1
115		01.50.00.6481	1
116		01.50Z00.6482	1
117		00.92.03.1120	2
118		00.92.03.1070	2
119		00.92.06.0110	1
120		00.68.01.0040	2
121		00.26.04.0070	1

REF.	LEG.	CODE	Q.TY
1	3,3a,4	01.30.00.0150	1
1	6	01.30.00.0120	1
7		00.07.02.0020	2
8		00.68.02.0030	24
9		00.92.03.1110	9
10		00.44.01.0010	2
11		00.68.01.0030	6
12		00.92.05.1040	6
20		00.66.06.0061	95
21		00.68.02.0020	95
23		00.26.02.0040	1
27		00.07.03.0120	1
28		00.68.02.0070	1
29		00.22.00.0111	2
30		00.18.00.1003	1
36		00.26.04.0020	2
37		00.92.03.1030	2
38	3,3a,4	01.50Z00.1392	1

REF.	LEG.	CODE	Q.TY
38	6	01.50Z00.1394	1
42		00.26.02.0040	2
43		00.68.01.0020	10
44		00.26.04.0040	7
48		00.78.01.0010	2
50		01.50.00.1395	1
52		00.40.00.0230	1
53		00.91.06.0050	6
55		00.29.01.0050	4
62		01.50.00.3530	2
63		00.68.02.0050	4
64		00.26.04.0060	7
65	3	01.50Z00.2910	1
65	3a,4	01.50Z00.2911	1
65	6	01.50Z00.2912	1
66	4,6,3a	01.50Z00.2901	2
68		00.92.05.1101	2
69		00.18.00.1010	2



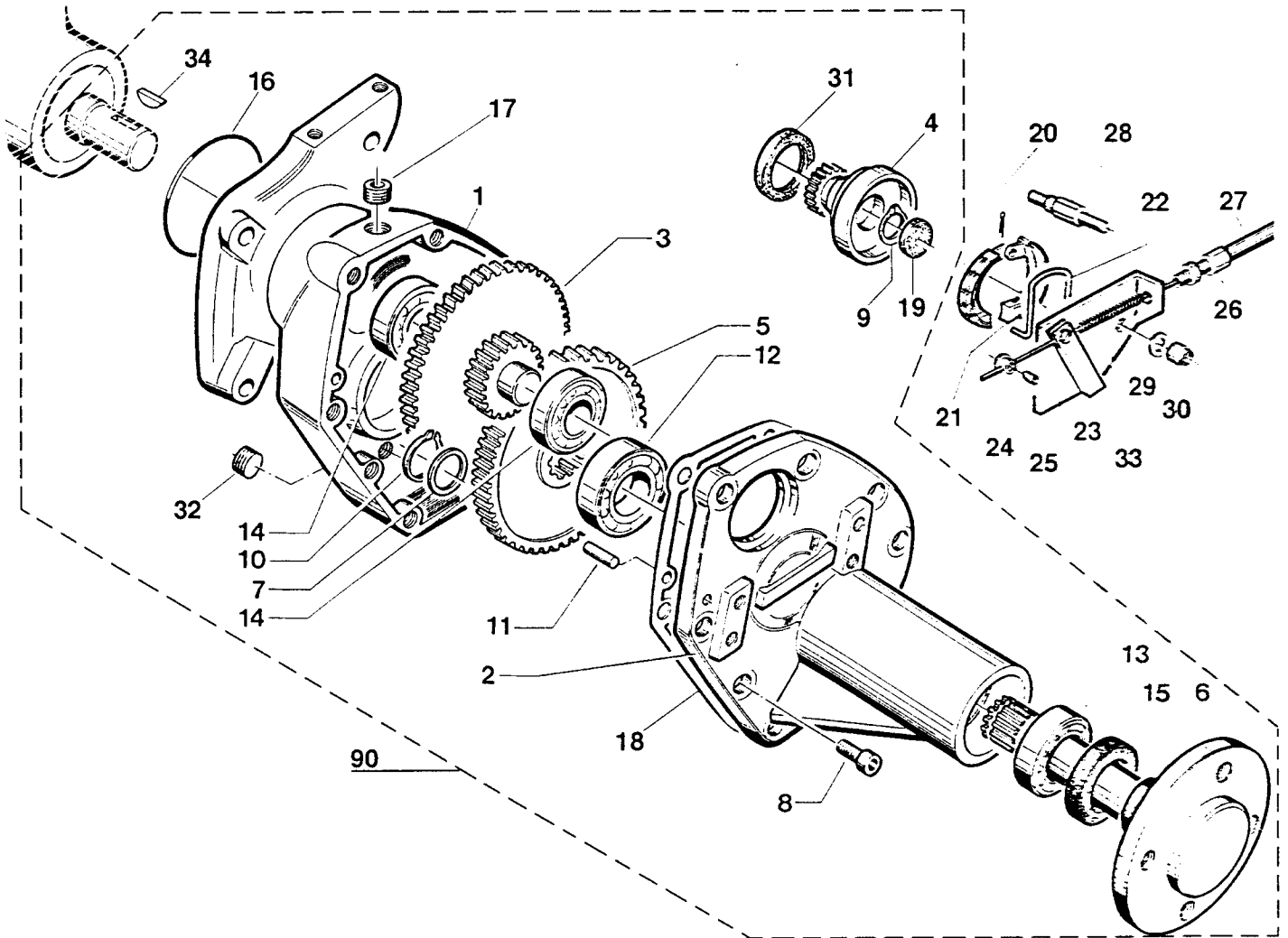
Tav. 06/95

480

700

900

15/09/98



REF.	LEG.	CODE	Q.TY
1		01.01.00.0021	1
2		01.01.00.0012	1
3		01.40.00.0311	1
4		01.40.00.0332	1
5		01.40.00.0321	1
6		01.40.00.0300	1
7		01.40.00.0950	1
8		00.90.06.0080	8
9		00.03.00.0130	1
10		00.03.00.0260	1
11		00.83.14.2024	2
12		00.22.00.0290	1

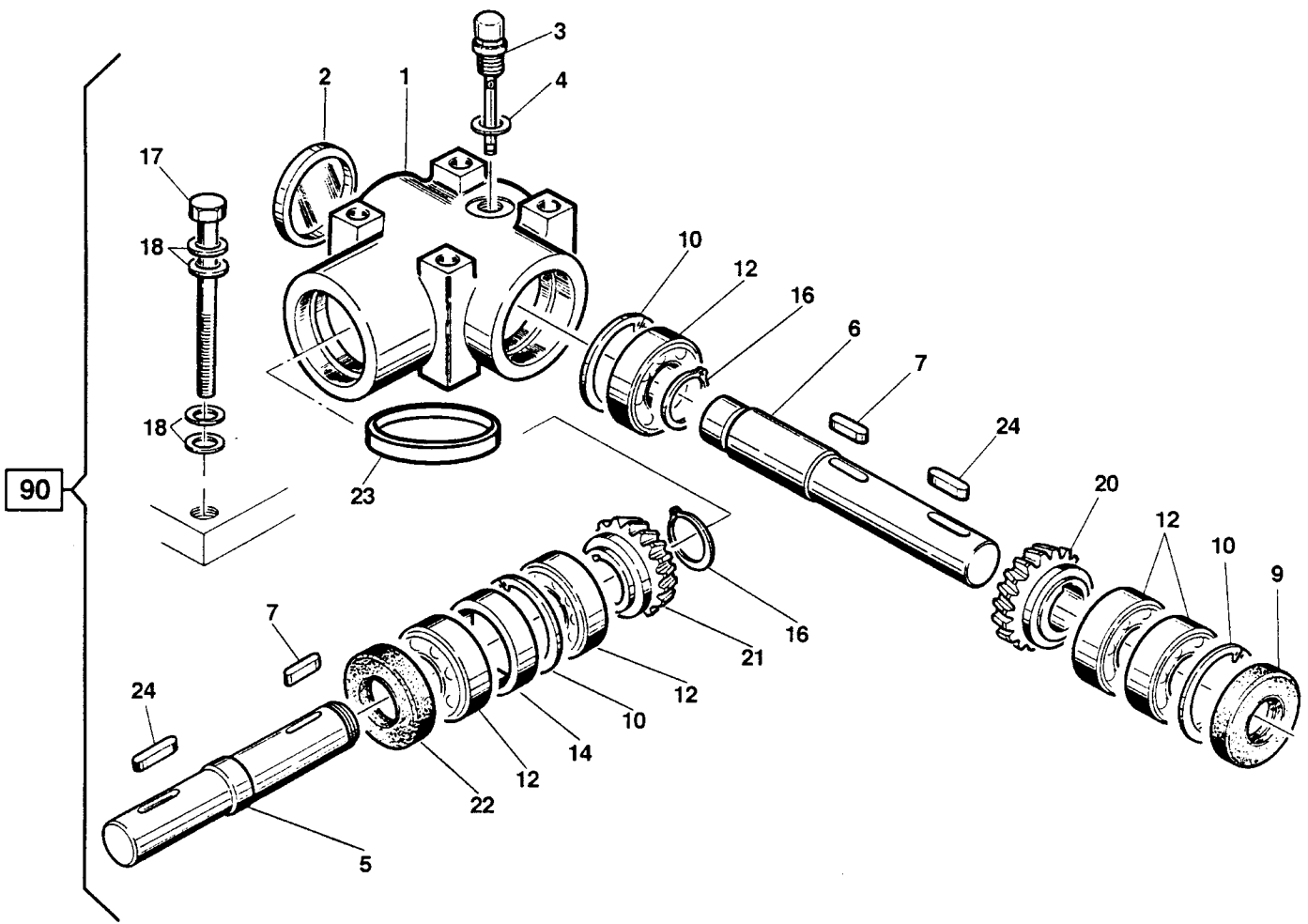
REF.	LEG.	CODE	Q.TY
13		00.22.00.0280	1
14		00.22.00.0220	2
15		00.05.00.0020	1
16		00.06.07.0695	1
17		00.85.00.0090	1
18		00.07.01.0100	1
19		00.07.06.0032	1
20		00.18.04.0025	1
21		00.34.01.0014	2
22		00.34.01.0015	1
23		01.90.00.0500	1
24		01.40.00.1030	1

REF.	LEG.	CODE	Q.TY
25		00.95.04.0009	1
26		00.13.03.0010	1
27		00.25.01.0040	1
28		01.40.00.0960	2
29		00.68.01.0030	2
30		00.26.04.0060	2
31		00.05.00.0040	1
32		00.65.01.0030	1
33		00.47.00.0160	2
34		00.43.10.0010	1
90		01.90.00.0480	2

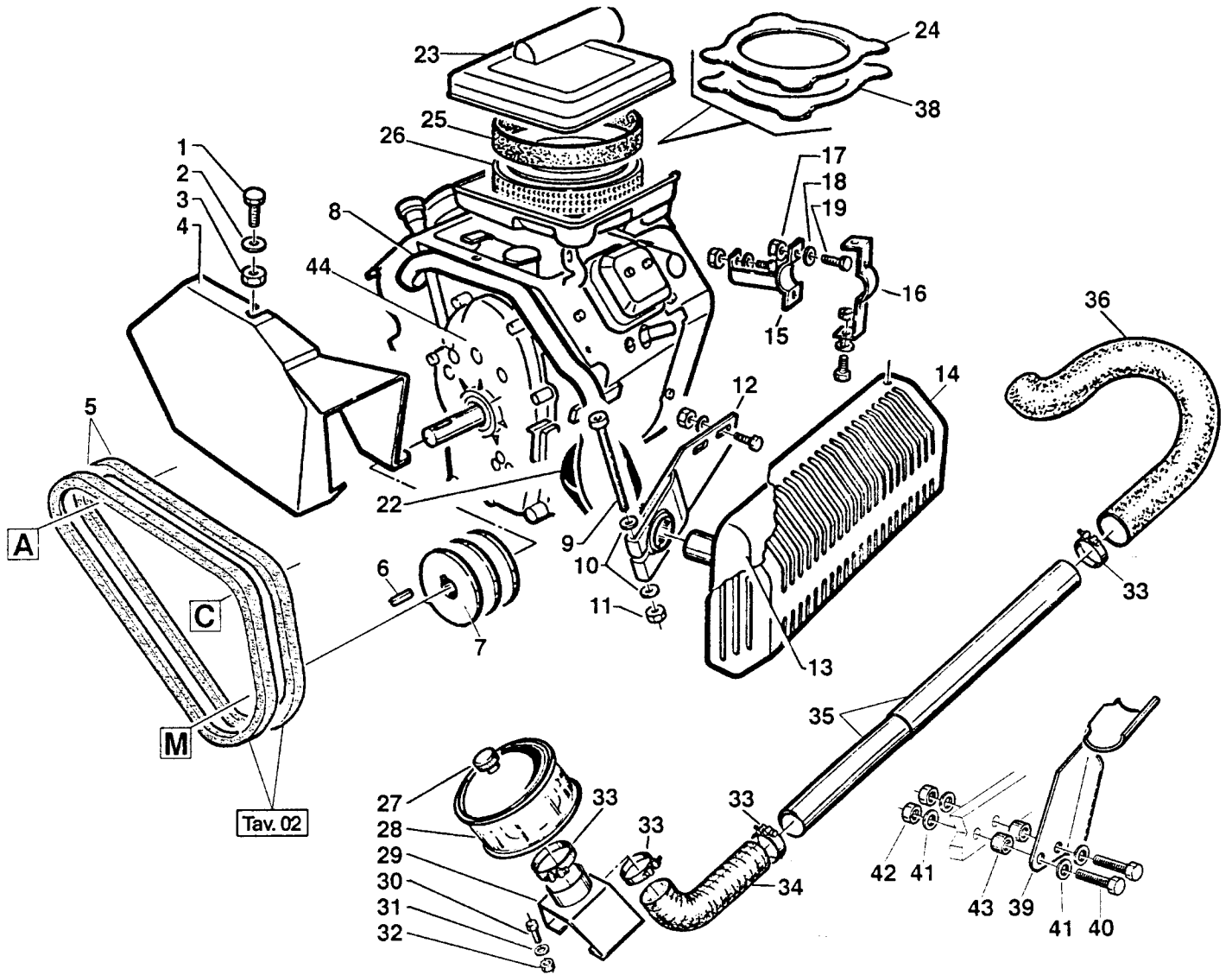


Tav. 07
480
700
900

15/09/98



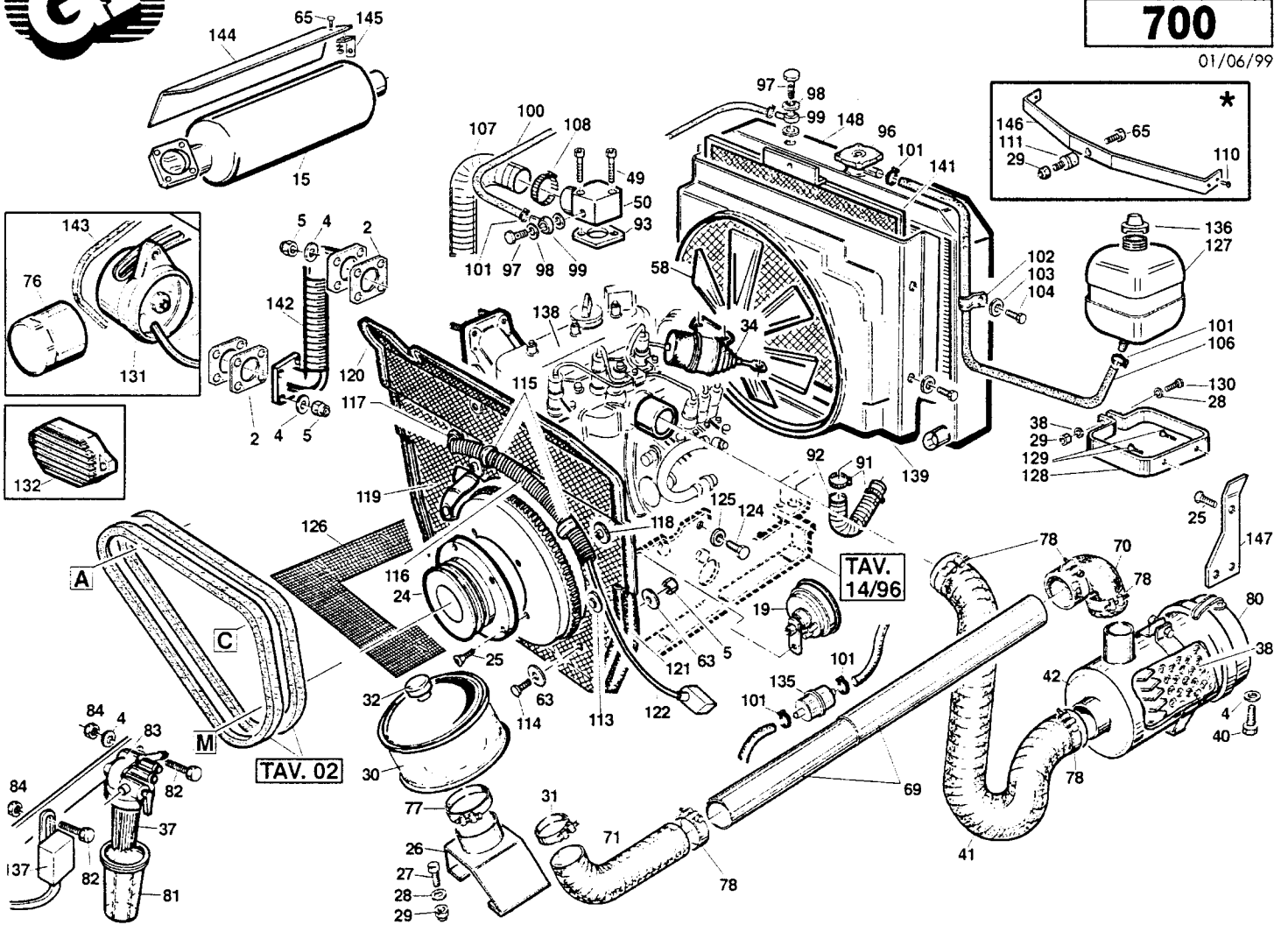
REF.	LEG.	CODE	Q.TY
1		01.01.00.0070	1
2		00.07.06.0020	1
3		00.85.04.0012	1
4		00.85.01.0032	1
5		01.40.00.0400	1
6		01.40.00.0161	1
7		00.43.00.0040	2
9		00.05.20.3052	1
10		00.03.01.0320	3
12		00.22.00.0400	5
14		01.40.00.0440	1
16		00.03.00.0160	1
17		00.92.06.0210	4
18		00.68.01.0040	16
20		01.40.00.0132	1
21		01.40.00.0131	1
22		00.05.25.2052	1
23		00.07.06.0062	1
24		00.43.00.0110	2
90		01.90.00.0125	1



REF.	LEG.	CODE	Q.TY
1		00.92.03.1020	4
2		00.26.02.0040	4
3		00.68.02.0030	4
4		01.50N00.0680	1
5		00.17.01.0020	2
6		00.43.00.0130	1
7		00.61.00.0150	1
8		01.50.00.0561	1
9		00.92.05.0200	1
10		00.68.01.0030	2
11		00.26.02.0060	1
12		01.50.00.0550	1
13		00.46.00.0010	1
14		01.50.00.1290	1

REF.	LEG.	CODE	Q.TY
15		01.50.00.1300	1
16		01.50.00.1320	1
17		00.26.02.0060	5
18		00.68.01.0030	5
19		00.92.05.1100	3
22		00.32.01.0010	1
23		01.50.00.2671	1
24		01.50Z00.2690	1
25		00.32.01.0020	1
26		00.32.01.0040	1
27		00.45.01.0020	1
28		01.50.00.1961	1
29		01.50N00.1960	1
30		00.92.03.1070	4

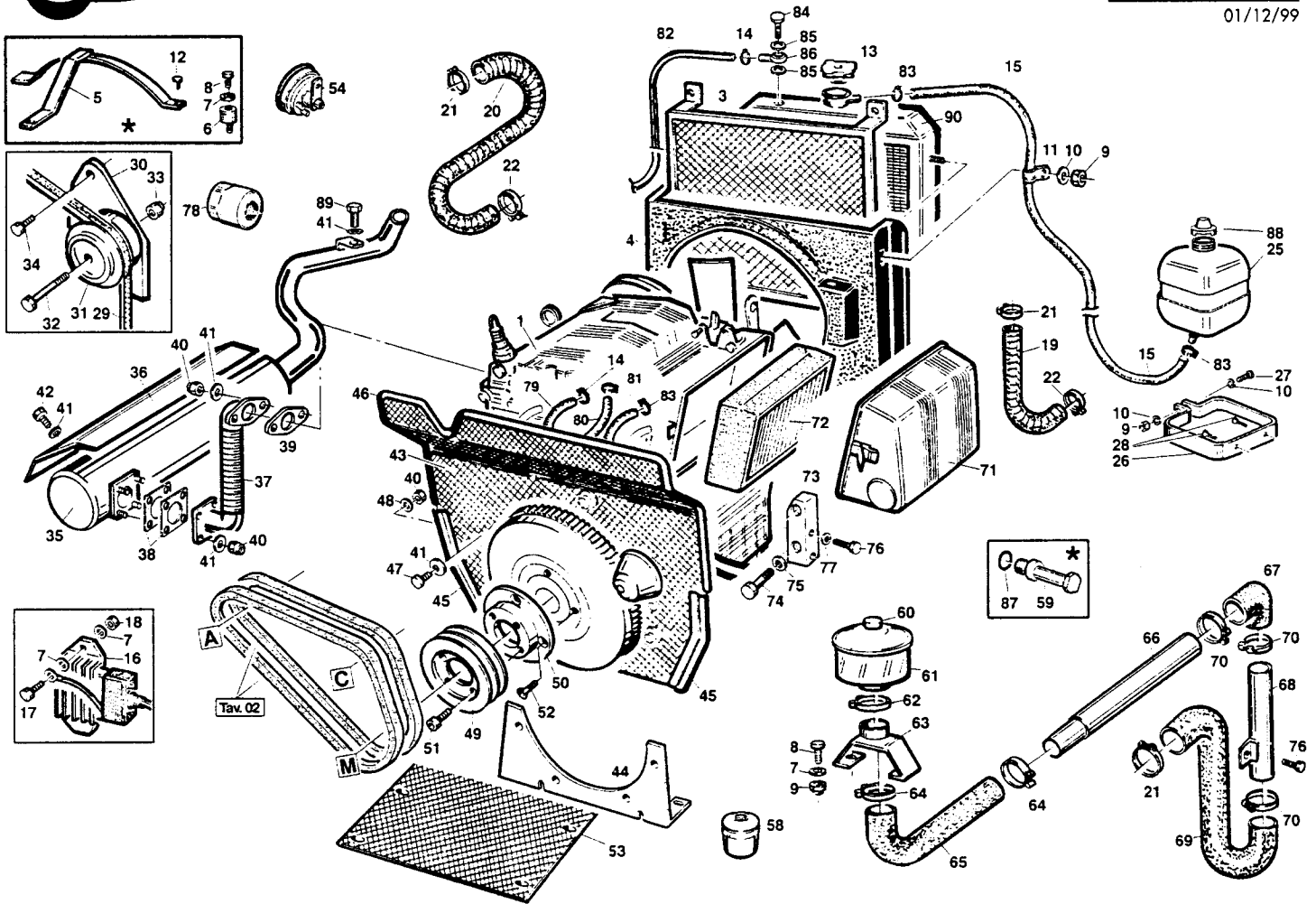
REF.	LEG.	CODE	Q.TY
31		00.68.01.3020	4
32		00.26.04.0040	4
33		00.29.04.0140	1
34		00.07.07.0030	1
35		01.50.00.2660	1
36		00.07.07.0050	1
38		00.07.01.0090	1
39		01.50N00.2681	1
40		00.92.05.0160	2
41		00.68.02.0050	7
42		00.26.04.0060	2
43		01.50.00.0770	2
44		00.54.00.0011	1



REF.	LEG.	CODE	Q.TY
2		00.55.01.0210	1
4		00.68.01.0030	12
5		00.26.02.0060	5
15		00.55.01.0140	1
19		00.40.00.0240	1
24		00.61.00.0220	1
25		00.95.05.0040	5
26		01.50N00.1960	1
27		00.92.03.1040	4
28		00.68.01.0020	10
29		00.26.04.0040	4
30		01.50.00.1961	1
31		00.29.04.0140	1
32		00.45.01.0020	1
34		00.55.01.0040	1
37		00.32.00.0010	1
38		00.32.00.0020	1
40		00.92.05.1040	2
41		00.07.07.0050	1
42		00.32.00.0030	1
49		00.90.04.0120	1
50		01.50.00.1501	1
58		00.55.01.0130	1
63		00.68.03.0040	4
65		00.92.03.1020	2
69		01.50.00.1950	1
70		00.07.07.0040	1
71		00.07.07.0030	1
76		00.32.00.0050	1

REF.	LEG.	CODE	Q.TY
77		00.29.10.0010	1
78		00.29.10.0020	5
80		00.55.01.0190	1
81		00.55.01.0100	1
82		00.92.05.0180	1
83		00.55.01.0220	1
84		00.26.04.0060	1
91		00.55.01.0320	2
92		00.55.01.0310	1
93		00.55.01.0030	1
96		00.54.10.0023	1
97		00.41.00.0200	2
98		00.41.00.0210	4
99		00.41.00.0190	2
100		00.89.00.1000	0,70
101		00.29.02.0016	6
102		00.29.01.0080	2
103		00.68.02.0030	4
104		00.92.03.1030	4
106		00.89.10.3000	0,50
107		00.07.07.0070	0,70
108		00.29.02.1033	2
110		00.66.06.0061	6
111		00.74.03.0070	1
113		00.92.05.0110	4
114		00.92.05.1070	4
115		00.29.00.0100	2
116		00.38.00.0017	0,30
117		00.07.01.0033	1

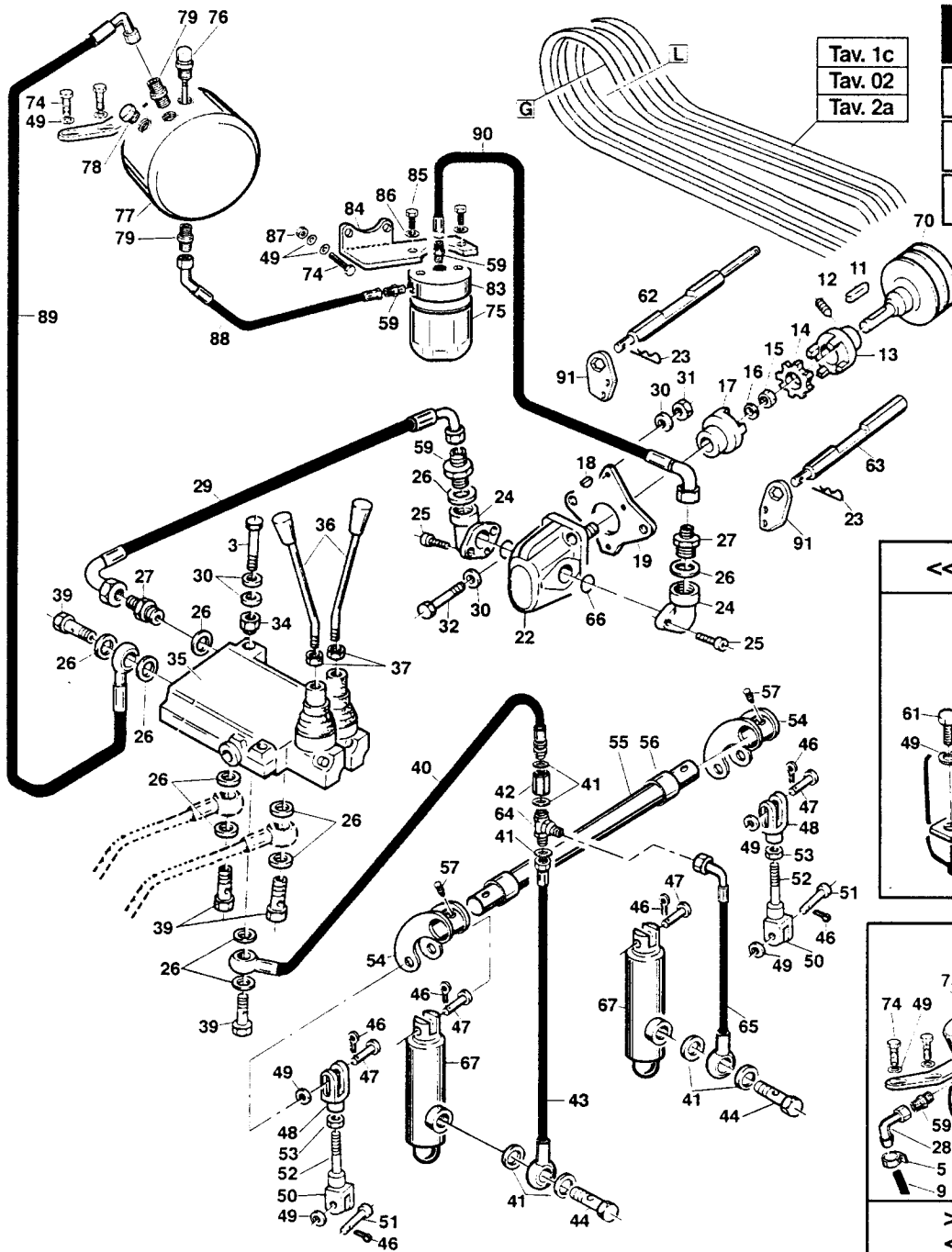
REF.	LEG.	CODE	Q.TY
118		00.13.03.0010	1
119		01.50Z00.2870	1
120		00.11.01.1000	1,00
121		00.11.01.2000	0,50
122		00.40.00.0280	1
124		00.92.06.3040	12
125		00.68.07.0080	12
126		01.50Z00.4090	1
127		00.75.00.0040	1
128		01.50.00.3020	1
129		00.95.04.0010	2
130		00.92.03.1090	1
131		00.55.01.0150	1
132		00.55.01.0070	1
135		00.32.00.0060	1
136		00.75.00.0041	1
137		00.55.01.0050	1
138		00.54.01.0021	1
139		00.54.10.0024	1
141		00.54.10.0031	1
142		01.50.00.4080	1
143		00.55.01.0020	1
144		01.50N00.4010	1
145		01.50Z00.4220	1
146		01.50N00.3521	1
147		01.50Z00.4240	1
148		00.54.10.0034	1



REF.	LEG.	CODE	Q.TY
1		00.54.04.0010	1
3		00.54.10.0031	1
4		00.54.10.0032	1
5		01.50N00.4000	1
6		00.74.03.0050	1
7		00.68.01.0020	6
8		00.92.03.1040	2
9		00.26.04.0040	7
10		00.68.03.0030	6
11		00.29.00.0080	2
12		00.66.06.0031	1
13		00.54.10.0023	1
14		00.29.02.0016	5
15		00.89.10.3000	1,1
16		00.55.04.0010	1
17		00.92.03.1070	2
18		00.26.01.0040	2
19		00.07.07.0100	1
20		00.07.07.0110	1
21		00.29.02.1043	2
22		00.29.02.1033	3
25		00.75.00.0040	1
26		01.50.00.3020	1
27		00.92.03.1110	1
28		00.95.04.0010	2
29		00.17.00.0100	1
30		00.55.04.0030	1

REF.	LEG.	CODE	Q.TY
31		00.55.04.0040	1
32		00.92.06.0170	1
33		00.26.04.0070	1
34		00.92.06.0100	1
35		00.46.00.0031	1
36		01.50N00.4010	1
37		01.50.00.4070	1
38		00.55.01.0210	2
39		00.55.04.0050	1
40		00.26.01.0060	13
41		00.68.01.0030	19
42		00.92.05.1010	2
43		01.50Z00.3820	1
44		01.50Z00.4280	1
45		00.11.01.2000	0,5
46		00.11.01.1000	1
47		00.92.05.1070	7
48		00.68.03.0040	5
49		00.61.00.0280	1
50		01.40.00.1160	1
51		00.90.07.0080	4
52		00.95.06.0040	4
53		01.50Z00.3720	1
54		00.40.00.0240	1
58		00.32.02.0010	1
60		00.45.01.0020	1
61		01.50.00.1961	1

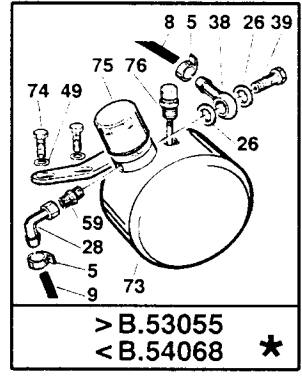
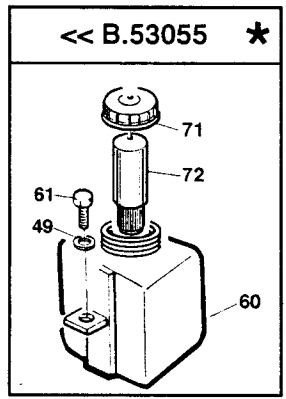
REF.	LEG.	CODE	Q.TY
62		00.29.10.0010	1
63		01.50N00.1960	1
64		00.29.04.0140	2
65		00.07.07.0030	1
66		01.50.00.2660	1
67		00.07.07.0040	1
68		01.50.00.3990	1
69		00.07.07.0090	1
70		00.29.10.0020	3
71		00.55.04.0090	1
72		00.32.02.0020	1
73		01.50Z00.4270	2
74		00.92.07.0090	4
75		00.68.01.0050	4
76		00.92.06.1080	4
77		00.68.01.0040	4
78		00.32.02.0030	1
79		00.89.00.1000	1,5
80		00.89.02.0000	0,2
81		00.89.02.0000	1,5
82		00.89.02.0000	0,7
83		00.29.10.0030	2
84		00.41.00.0200	1
85		00.41.00.0210	2
86		00.41.00.0280	1
88		00.75.00.0041	1
89		00.92.05.1110	1
90		00.54.10.0034	1



Tav. 13

480
700
900

01/12/99



REF.	LEG.	CODE	Q.TY
3		00.92.03.0150	2
11		00.43.00.0110	1
12		00.96.04.0009	1
13		00.41.00.0160	1
14		00.41.00.0170	1
15		00.41.00.0320	1
16		00.41.00.0321	1
17		00.41.00.0150	1
18		00.43.10.0020	1
19		01.50Z00.1440	1
22		00.41.00.0010	1
23		00.18.00.1010	3
24		00.41.00.0180	2
25		00.90.05.0080	6
26		00.41.00.0070	11
27		00.41.00.0100	2
29		00.41.00.0040	1
30		00.68.01.0020	12
31		00.26.04.0040	4
32		00.92.03.1110	4
34		00.26.02.0040	2
35		00.41.00.0020	1

REF.	LEG.	CODE	Q.TY
36		00.41.00.0330	2
37		00.26.02.0060	2
39		00.41.00.0250	4
40		00.41.00.0300	1
41		00.41.00.0060	8
42		00.41.00.0290	1
43		00.41.00.0031	1
44		00.18.00.0120	2
46		00.18.04.0052	6
47		00.33.03.0023	2
48		00.33.03.0032	2
49		00.68.01.0040	4
50		00.33.03.0020	2
50	T3	00.33.03.0030	2
51		00.33.03.0022	2
52		00.60.03.0140	2
53		00.26.02.0080	2
54		01.50.00.0651	2
55		01.50.00.0660	1
56		01.50.00.0670	2
57		00.83.16.0040	2
59		00.41.00.0110	3

REF.	LEG.	CODE	Q.TY
62		01.50.00.1451	1
63		01.50.00.1452	1
64		00.41.00.0350	1
65		00.41.00.0041	1
66		00.06.07.0160	2
67		00.58N00.0010	2
70		00.61.00.0260	1
74		00.92.06.0100	3
75		00.32.00.0080	1
76		00.85.04.0013	1
77		00.75.00.0062	1
78		00.85.02.0004	1
79		00.41.00.1396	2
83		01.40.00.1820	1
84		01.50Z00.4675	1
85		00.92.05.1040	2
86		00.68.01.0030	2
87		00.26.02.0080	1
88		00.41.00.1490	1
89		00.41.00.1480	1
90		00.41.00.1470	1
91		01.50.00.1453	2

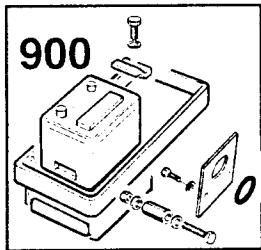
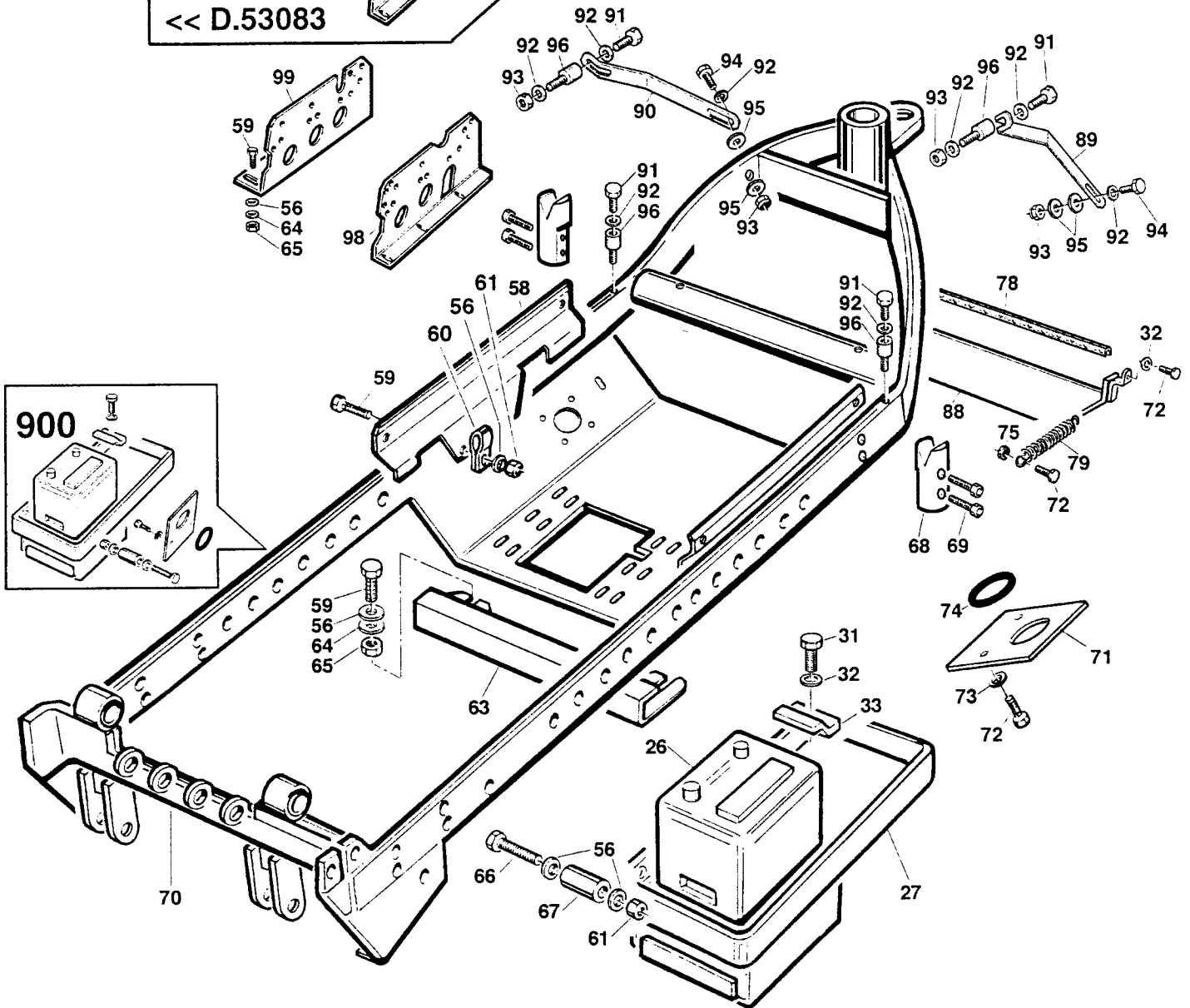
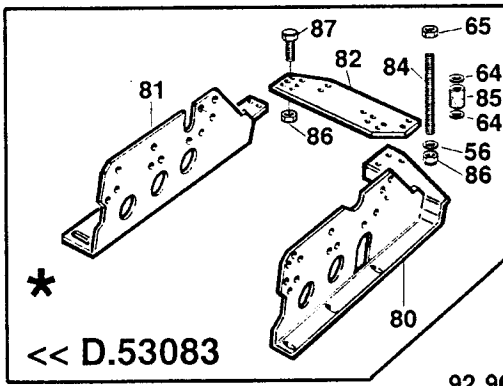


Tav. 14/96

700

900

01/12/99



REF.	LEG.	CODE	Q.TY	REF.	LEG.	CODE	Q.TY	REF.	LEG.	CODE	Q.TY
26		00.09.00.0030	1	65		00.26.01.0080	6	80		01.50N00.3560	1
27		01.50N00.1550	1	66		00.92.06.0190	3	81		01.50N00.3570	1
31		00.92.03.1090	2	67		01.40.00.1120	3	88		01.50N00.3731	1
32		00.68.01.0020	6	68		01.30.00.0310	2	89		01.50.00.6330	1
33		01.50Z00.1750	1	69		00.90.04.0120	4	90		01.50.00.6320	1
56		00.68.01.0040	12	70		01.50N00.3750	1	91		00.92.05.1040	4
58	L	01.50Z00.3080	2	71		01.50.00.3950	1	92		00.68.01.0030	8
58	K	01.50Z00.3081	2	72		00.92.03.1070	5	93		00.26.04.0060	4
59		00.92.06.0100	6	73		00.68.02.0030	2	94		00.92.05.1120	2
60		01.50.00.1710	5	74		00.11.01.3000	0.35	95		00.68.02.0050	4
61		00.26.02.0080	5	75		00.26.02.0040	1	96		00.74.03.0070	4
63		01.50Z00.3120	1	78		00.11.01.1000	0.48	98		01.50N00.3571	1
64		00.68.02.0070	10	79		00.47.00.0050	1	99		01.50N00.3561	1



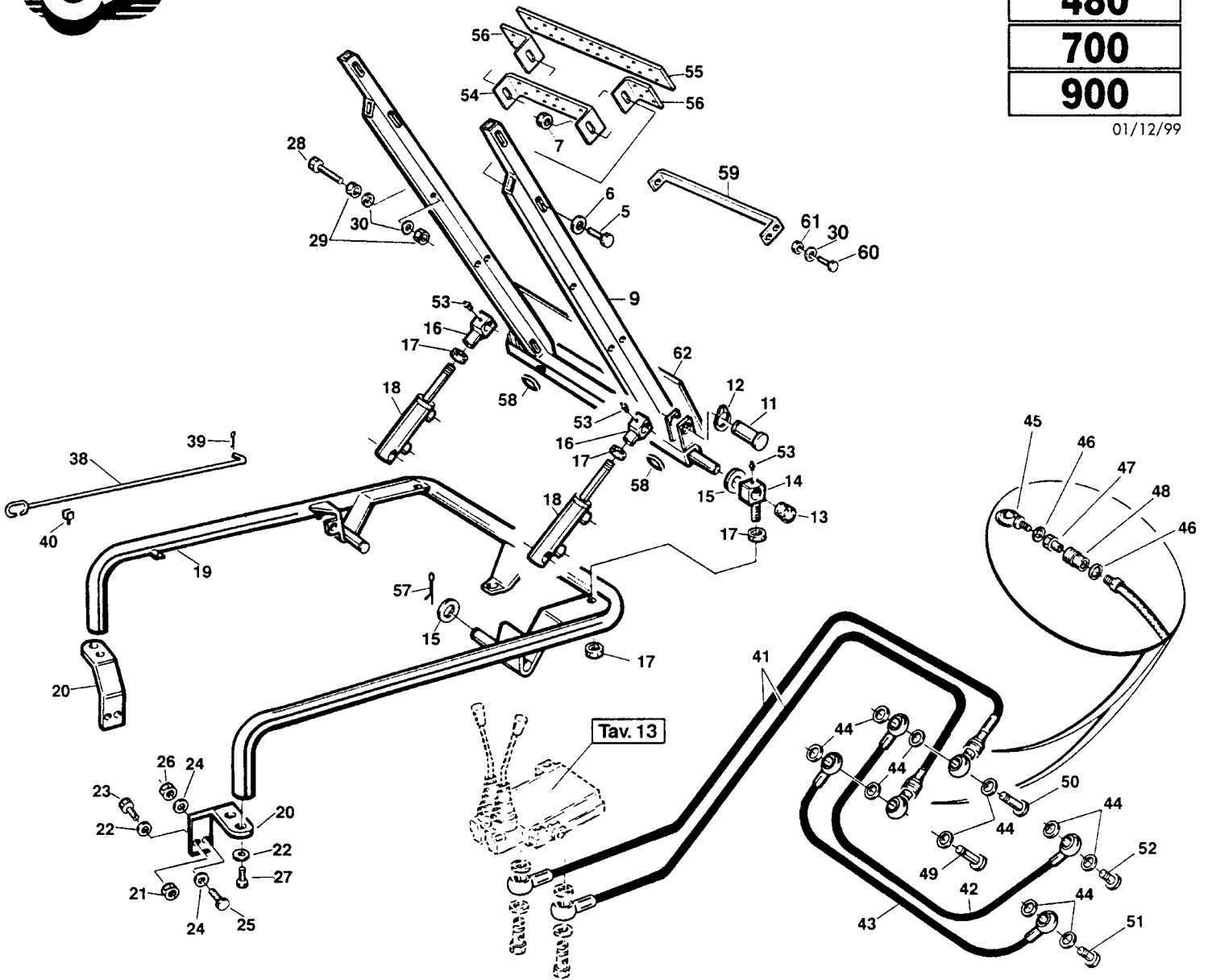
Tav. 16/95

480

700

900

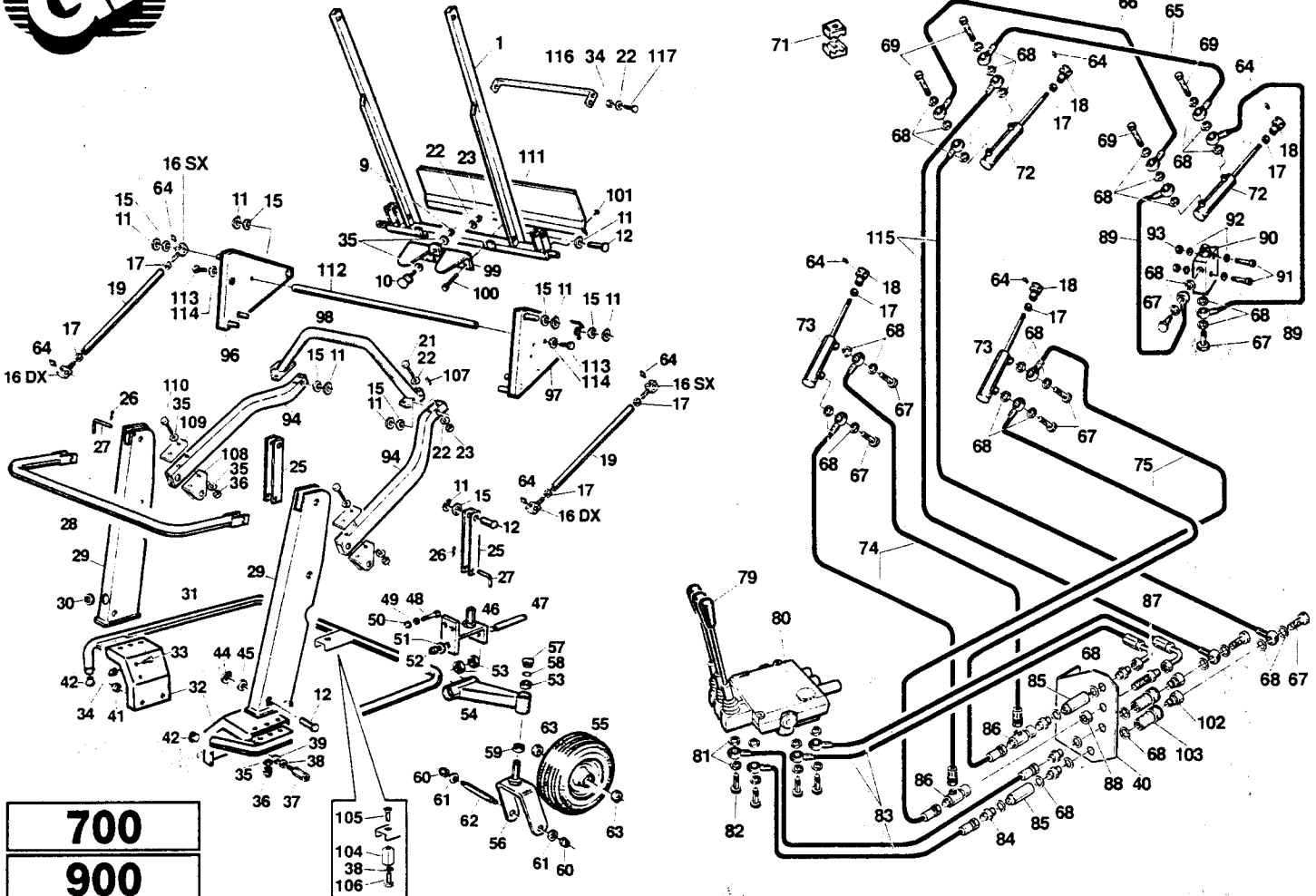
01/12/99



REF.	LEG.	CODE	Q.TY
5		00.92.06.0120	1
6		00.68.01.0040	1
7		00.26.04.0070	1
9	3,3a,4	01.50F00.2251	1
9	6	01.50F00.2250	1
11		01.50.00.2310	2
12		00.03.10.0020	2
13		00.07.03.0090	2
14		01.90.00.0530	2
15		00.68.01.0090	3
16		01.90.00.0540	2
17		00.26.03.1110	6
18		00.58N00.0040	2
19	3a	01.50F00.3280	1
19	4	01.50F00.3330	1
19	6	01.50F00.3320	1
20		01.50N00.3290	2
21		00.26.01.0080	2

REF.	LEG.	CODE	Q.TY
22		00.68.01.0050	2
23		00.92.07.0100	2
24		00.68.01.0040	4
25		00.92.06.0110	2
26		00.26.04.0070	2
27		00.92.07.1070	2
28		00.92.05.0140	1
29		00.26.02.0060	4
30		00.68.01.0030	8
38		01.50.00.0490	1
39		00.18.04.0021	1
40		00.99.00.0030	1
41	3a	00.41.00.0570	2
41	4,6	00.41.00.0580	2
42		00.41.00.0420	1
43		00.41.00.0430	1
44		00.41.00.0060	14
45		00.41.00.0240	2

REF.	LEG.	CODE	Q.TY
46		00.41.00.0060	4
47		00.41.00.0470	2
48		00.41.00.0460	2
49		00.41.00.0123	1
50		00.41.00.0124	1
51		00.41.00.0122	1
52		00.41.00.0120	1
53		00.42.00.0020	4
54	3a,4	01.50.00.1901	1
55	6	01.50.00.2132	1
56		01.50.00.2133	2
57		00.18.04.0047	2
58		00.07.01.0032	2
59	6	01.50Z00.5450	1
60		00.92.05.1120	3
61		00.26.04.0060	3
62	3,4	01.50.00.24332	1
62	6	01.50.00.24333	1



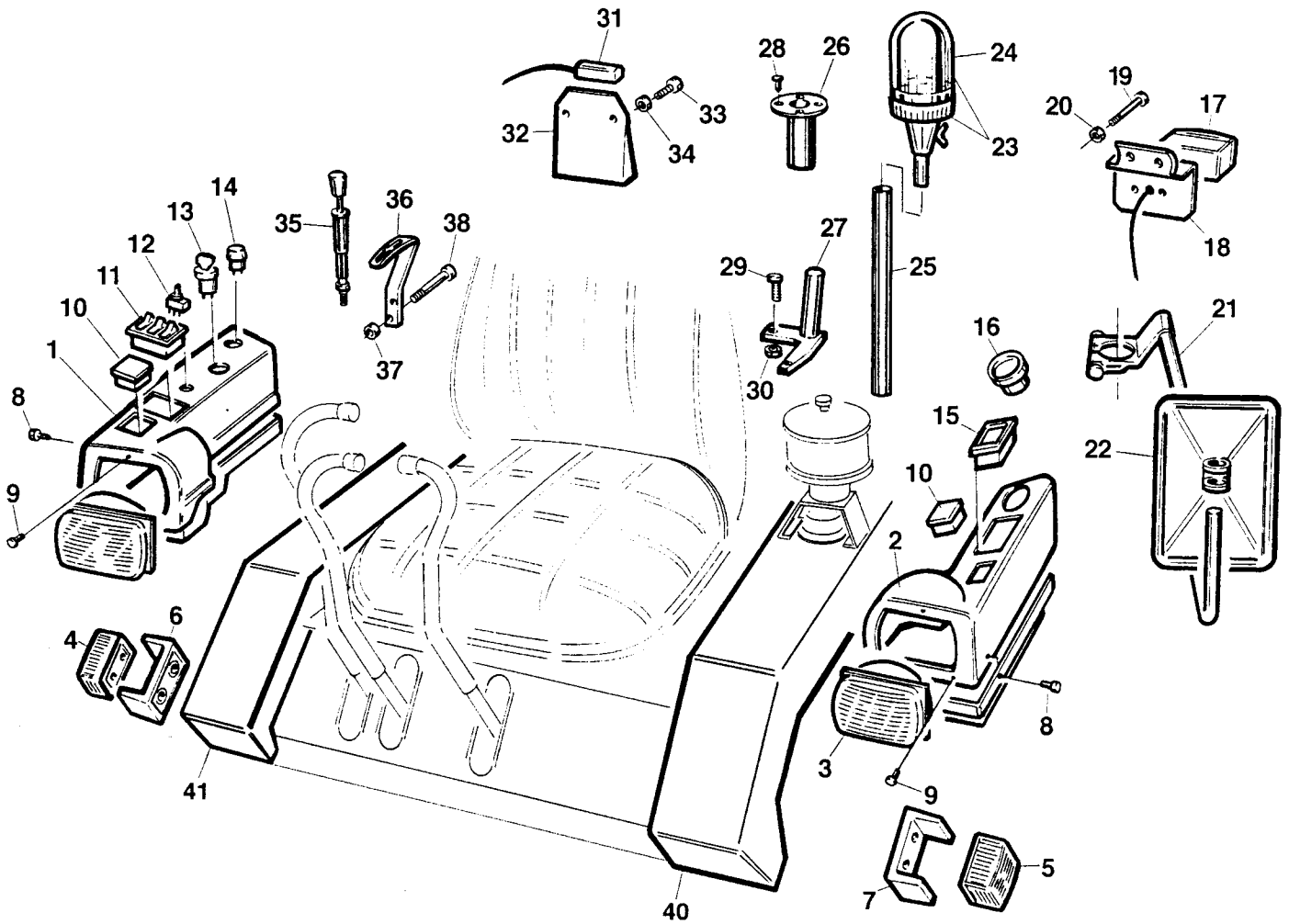
700
900

105
104
38
106

REF.	LEG.	CODE	Q.TY
1	6	01.50F00.2250	1
1	4	01.50F00.2251	1
9		00.26.02.0080	1
10		00.74.01.0090	1
11		00.03.10.0020	10
12		01.50.00.2310	10
15		00.68.01.0090	20
16	dx	01.90.00.0530	2
16	sx	01.90.00.0531	2
17		00.26.03.0110	8
18		01.90.00.0540	4
19		01.50F00.2281	2
21		00.92.05.0210	4
22		00.68.01.0030	4
23		00.26.02.0060	4
25		01.50F00.2440	2
26		00.18.00.1010	3
27		01.50.00.2441	3
28	6	01.50F00.2390	1
28	4	01.50F00.2391	1
29		01.50F00.2260	2
30		00.07.01.0032	2
31	6	01.50F00.2470	1
31	4	01.50F00.2471	1
32	4	01.50F00.2340	2
32	6	01.50F00.2341	2
33		00.92.05.1040	2
34		00.26.04.0060	4
35		00.68.01.0040	14
36		00.26.04.0070	10
37		01.40.00.0730	3
38		00.68.01.0050	4
39		00.26.02.0090	3
40		01.50Z00.2570	1
41		01.50.00.0770	8
42		00.07.01.1040	2

REF.	LEG.	CODE	Q.TY
44		00.92.05.0060	2
45		00.68.01.0030	2
46		01.50N00.2321	1
47		01.50.00.2580	1
48		00.92.06.0120	2
49		00.26.04.0070	2
50		00.68.01.0040	2
51		00.68.01.0090	1
52		00.26.05.1120	1
53		00.22.00.0270	4
54		01.50N00.2330	1
55		W	2
56		01.50N00.1041	2
57		00.07.06.0020	2
58		00.03.10.0025	2
59		00.22.00.0222	2
60		00.26.04.1090	4
61		00.68.01.0065	4
62		01.40.00.0470	2
63		00.22.00.0100	4
64		00.42.00.0010	8
65		00.41.00.0430	1
66		00.41.00.0420	1
67		00.41.00.0120	8
68		00.41.00.0060	38
69		00.41.00.0124	4
71		00.41.00.0440	6
72		00.58N00.0040	2
73		00.58N00.0030	2
74		00.41.00.0400	2
75		00.41.00.0410	2
79		00.41.00.0330	3
80		00.41.00.0340	1
81		00.41.00.0070	8
82		00.41.00.0250	4
83		00.41.00.0380	4

REF.	LEG.	CODE	Q.TY
84		00.41.00.0450	5
85		00.41.00.0290	2
86		00.41.00.0350	2
87		00.41.00.0360	1
88		00.41.00.0370	1
89		00.41.00.0540	2
90		00.41.00.0530	1
91		00.90.03.0180	2
92		00.68.01.0010	2
93		00.26.01.0030	2
94		01.50F00.3400	2
96		01.50F00.2291	1
97		01.50F00.2301	1
98	6	01.50F00.3420	1
98	4	01.50F00.3390	1
99		01.50N00.3430	1
100		00.92.05.0160	3
101		00.66.06.0061	4
102		00.41.00.0470	2
103		00.41.00.0460	2
104		01.40N00.1960	1
105		00.95.07.0040	1
106		00.92.07.1070	1
107		00.83.16.0020	4
108		01.50F00.5070	2
109		01.50F00.5080	2
110		00.92.06.0190	4
111	4	01.50.00.2432	1
111	6	01.50.00.2433	1
112	4	01.50F00.7080	1
112	6	01.50F00.5750	1
113		00.92.05.0140	2
114		00.68.02.0050	2
115		00.41.00.0391	2
116	6	01.50Z00.5450	1
117	6	00.92.05.1120	3



REF.	LEG.	CODE	Q.TY
1	DX	01.30.00.0260	1
2	SX	01.30.00.0270	1
3		00.40.00.0600	2
4	DX	00.40.00.0430	1
5	SX	00.40.00.0530	1
6	DX	00.40.00.0440	1
7	SX	00.40.00.0520	1
8		00.94.09.3050	6
9		00.90.02.0060	8
10		00.40.00.0130	2
11		00.40.00.0590	1
12		00.40.00.0500	1
13		00.40.00.0081	1
14		00.40.00.0180	1

REF.	LEG.	CODE	Q.TY
15		00.40.00.0360	1
16		00.40.00.0390	1
17		00.40.00.0580	2
18		01.50N00.3440	2
19		00.92.03.0150	4
20		00.26.04.0040	8
21		01.50N00.3640	1
22		00.99.00.0210	1
23		00.40.00.0490	1
24		00.40.00.0480	1
25		01.50.00.3655	1
26		01.50.00.3660	1
27		01.50.00.3650	1
28		00.66.06.0061	4

REF.	LEG.	CODE	Q.TY
29		00.92.05.1070	2
30		00.26.04.0060	2
31		00.40.00.0550	1
32		00.40.00.0540	1
33		00.91.04.0100	4
34		00.26.04.0020	4
35		00.41.00.0600	3
36		00.41.00.0610	3
37		01.40.00.1220	6
38		00.90.03.0170	6
40		01.50.00.1193	1
41		01.50.00.1204	1



Gianni Ferrari s.r.l.

A - 25
A - 26

Turbograss

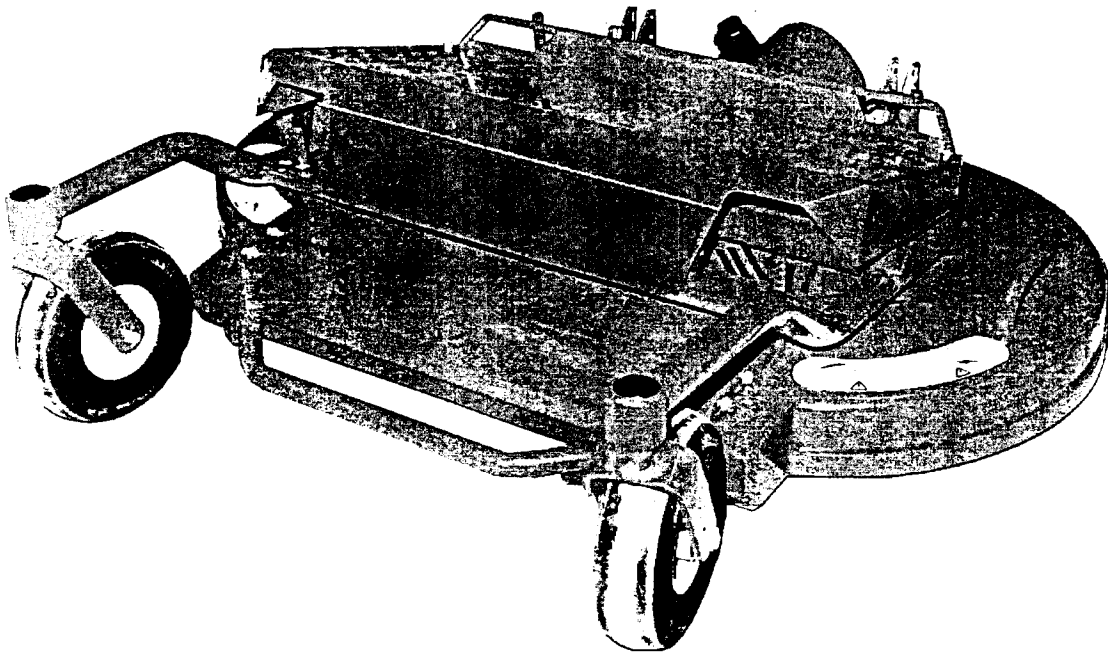
PIATTO CM. 130 RC

TONDEUSE CM. 130 RC

MÄHWERK CM. 130 RC

MOWERDECK CM. 130 RC

cm. 130 - R.C.



CATALOGO PARTI DI RICAMBIO
CATALOGUE PIECES DETACHEES
ERSATZTEILKATALOG
PARTS MANUAL

01. 2000



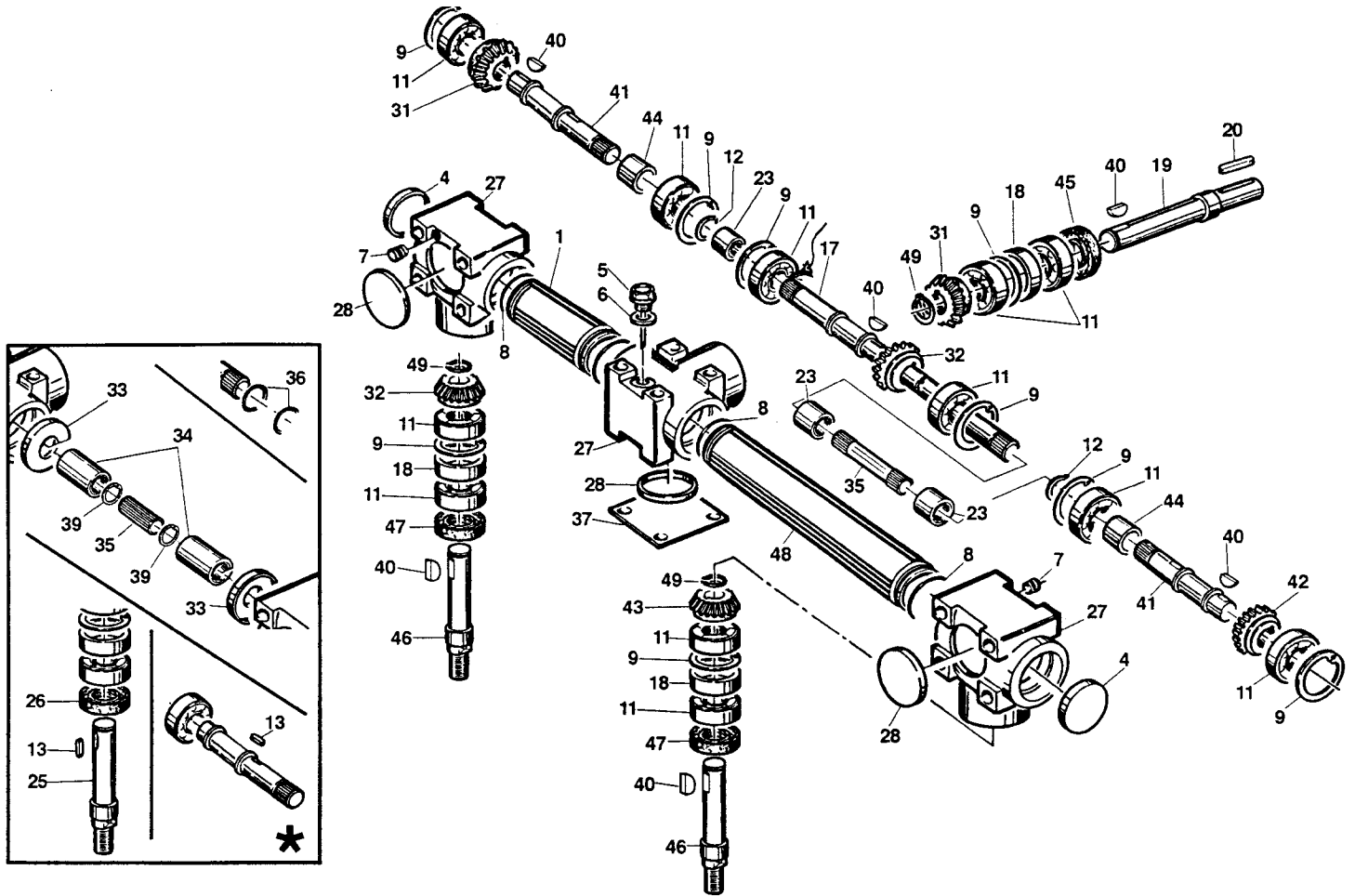
cm. 130 - R.C.

A 25

700

900

05/06/99



REF.	LEG.	CODE	Q.TY
1		01.40.00.0422	1
4		00.07.06.0020	2
5		00.85.01.0031	1
6		00.85.01.0032	1
7		00.85.01.0030	2
8		00.06.04.0490	4
9		00.03.01.0052	9
11		00.22.00.0400	12
12		00.03.00.0160	2
17		01.40.00.0392	1

REF.	LEG.	CODE	Q.TY
18		01.40.00.0440	3
19		01.40.00.0400	1
20		00.43.00.0110	1
23		01.40.00.0430	3
27		01.01.00.0070	3
28		00.07.06.0062	3
31		01.40.00.0133	2
32		01.40.00.0134	2
35		01.40.00.0990	1
37		01.50.00.3070	1

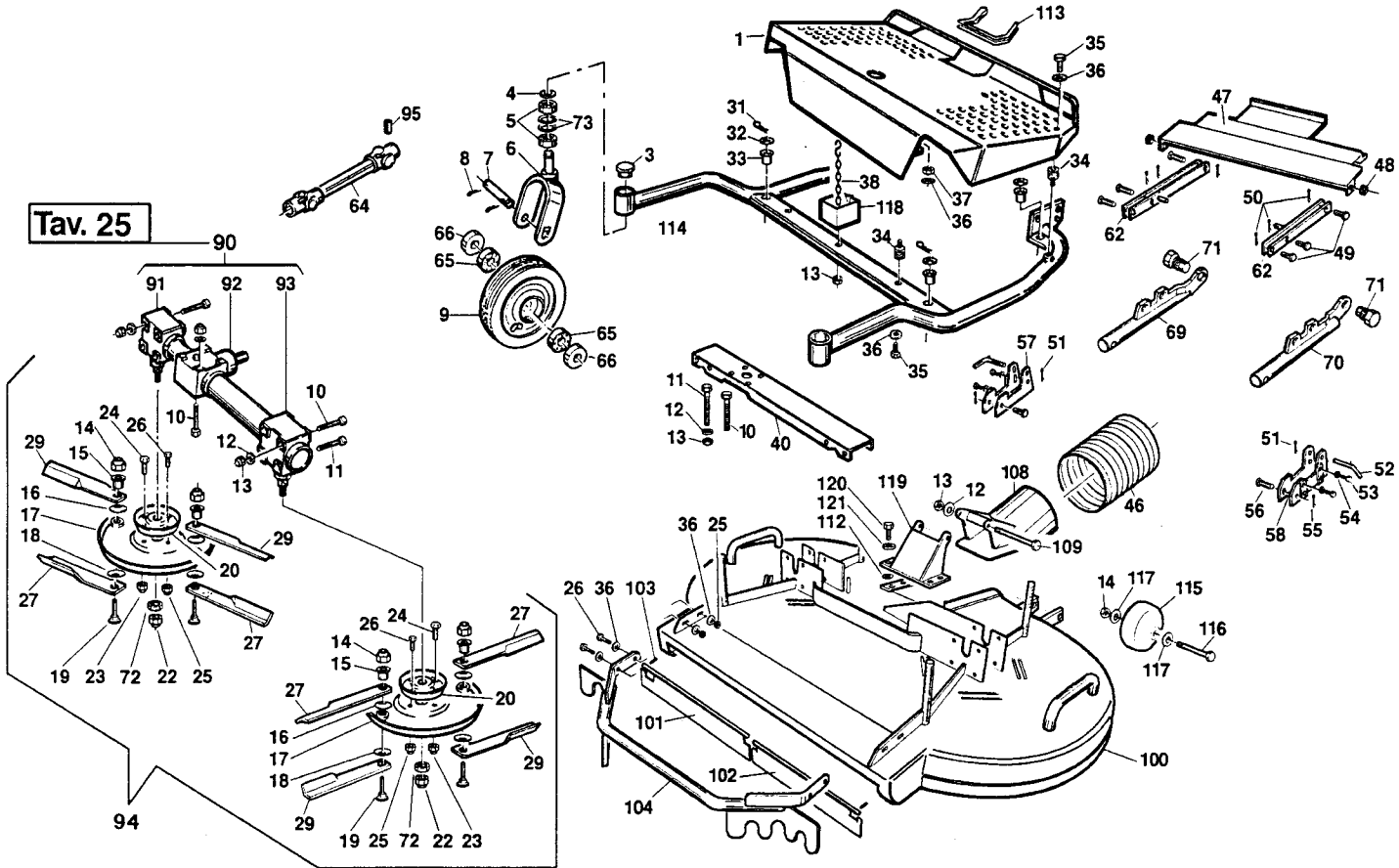
REF.	LEG.	CODE	Q.TY
40		01.40.00.2052	6
41		01.40.00.0385	2
42		01.40.00.0135	1
43		01.40.00.0136	1
44		01.40.00.2180	23
45		00.05.25.2052	1
46		01.40.00.0372	2
47		00.05.38.0052	2
48		01.40.00.0413	1
49		00.03.10.0020	3



cm. 130 - R.C.

A 26
700
900

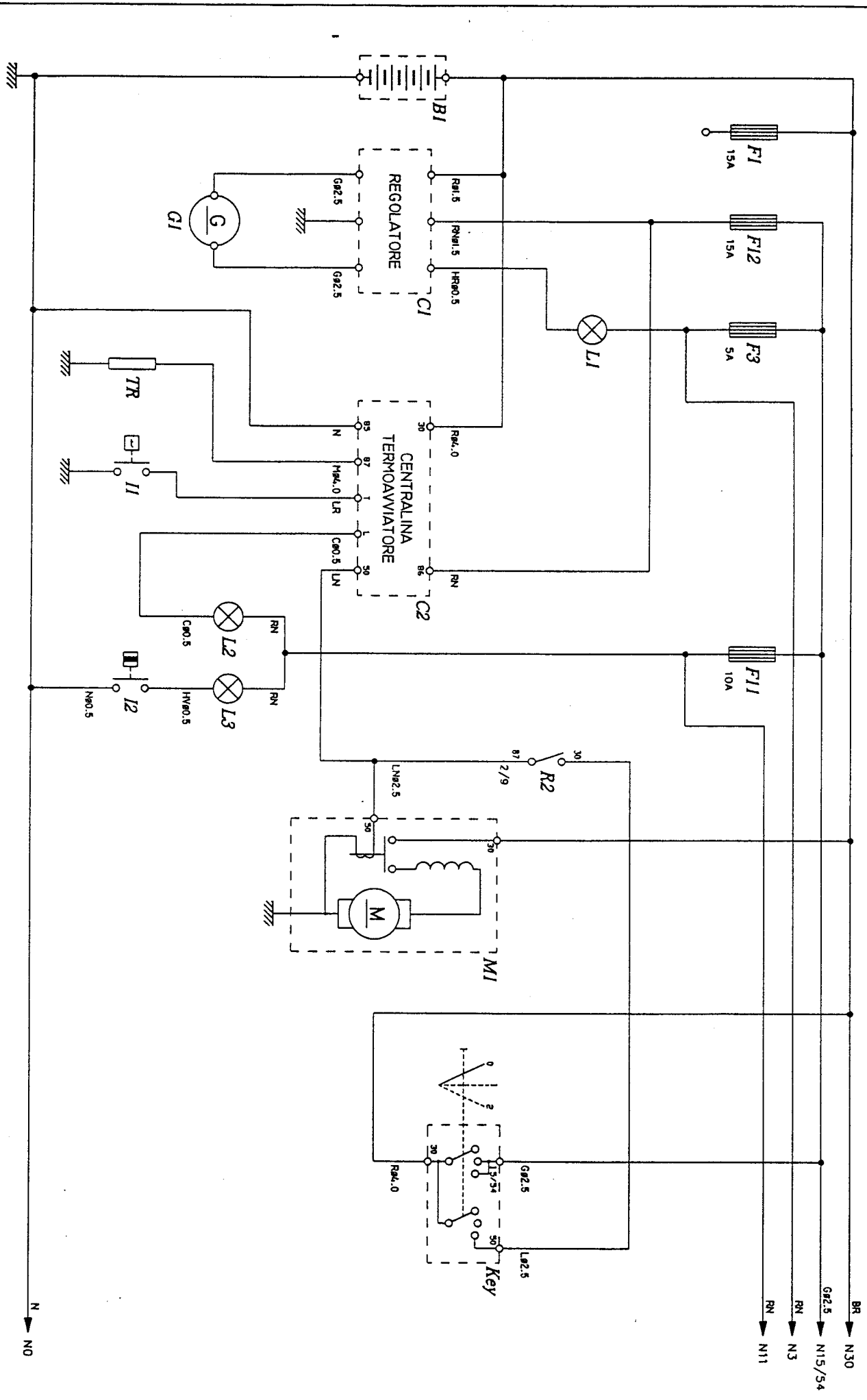
31/08/99



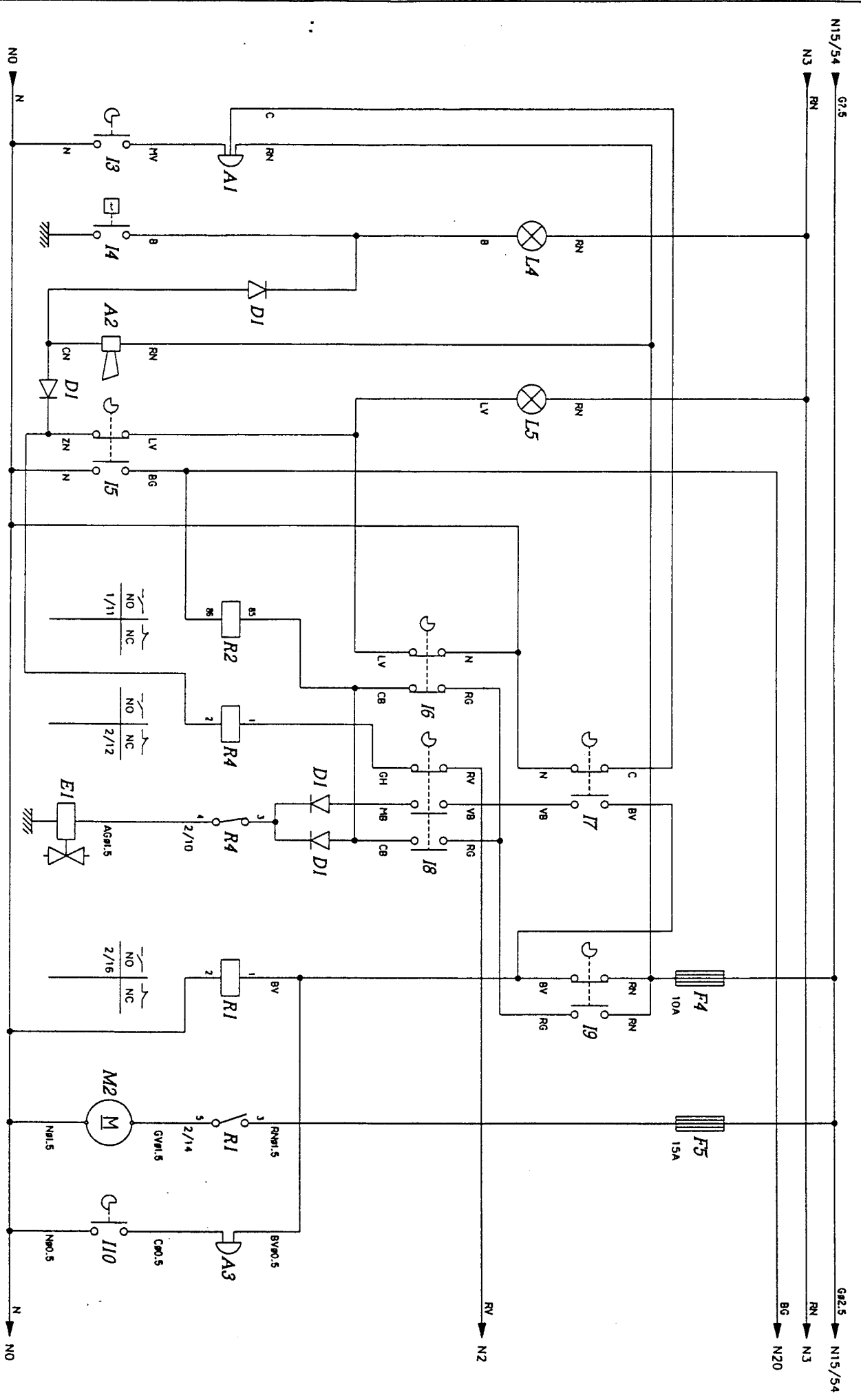
REF.	LEG.	CODE	Q.TY
1		01.50F00.3160	1
3		00.07.06.0010	2
4		00.03.00.0160	2
5		00.22.00.0210	4
6		01.50F00.1241	2
7		01.50.00.0800	2
8		00.18.04.0065	4
9		W	2
10		00.92.06.0220	8
11		00.92.06.0230	4
12		00.68.01.0040	18
13		00.26.04.0070	14
14		00.26.04.0080	6
15		01.40.00.1010	4
16		00.48.00.0160	4
17		01.50N00.2741	2
18		00.48.00.0183	4
19		01.40.00.1000	4
20		01.50.00.0692	2
22		00.26.04.1100	2
23		00.26.04.0070	4
24		00.92.06.1060	4
25		00.26.04.0060	8
26		00.92.05.1080	8
27		01.33.01.0050	4
29		01.33.01.0060	4
31		00.18.00.1050	4

REF.	LEG.	CODE	Q.TY
32		00.68.08.0419	4
33		01.50.00.1250	4
34		00.74.03.0070	4
35		00.92.05.1080	4
36		00.68.01.0030	14
37		00.26.01.0060	2
38		01.50.00.0830	1
40		01.50N00.2970	1
46		00.89.00.0030	0,5
47		01.50N00.3000	1
48		00.07.01.0033	2
49		00.33.03.0022	6
50		00.18.04.0043	6
51		00.18.00.1010	2
52		01.50.00.2441	2
53		00.92.06.1060	4
54		00.68.01.0040	4
55		00.18.00.1010	2
56		01.50.00.2950	2
57		01.50Z00.2930	1
58		01.50Z00.2940	1
62		01.50.00.2920	2
64		00.39.00.0040	1
65		00.22.00.0230	4
66		01.30.00.0180	4
69		01.50Z00.3780	1
70		01.50Z00.3790	1

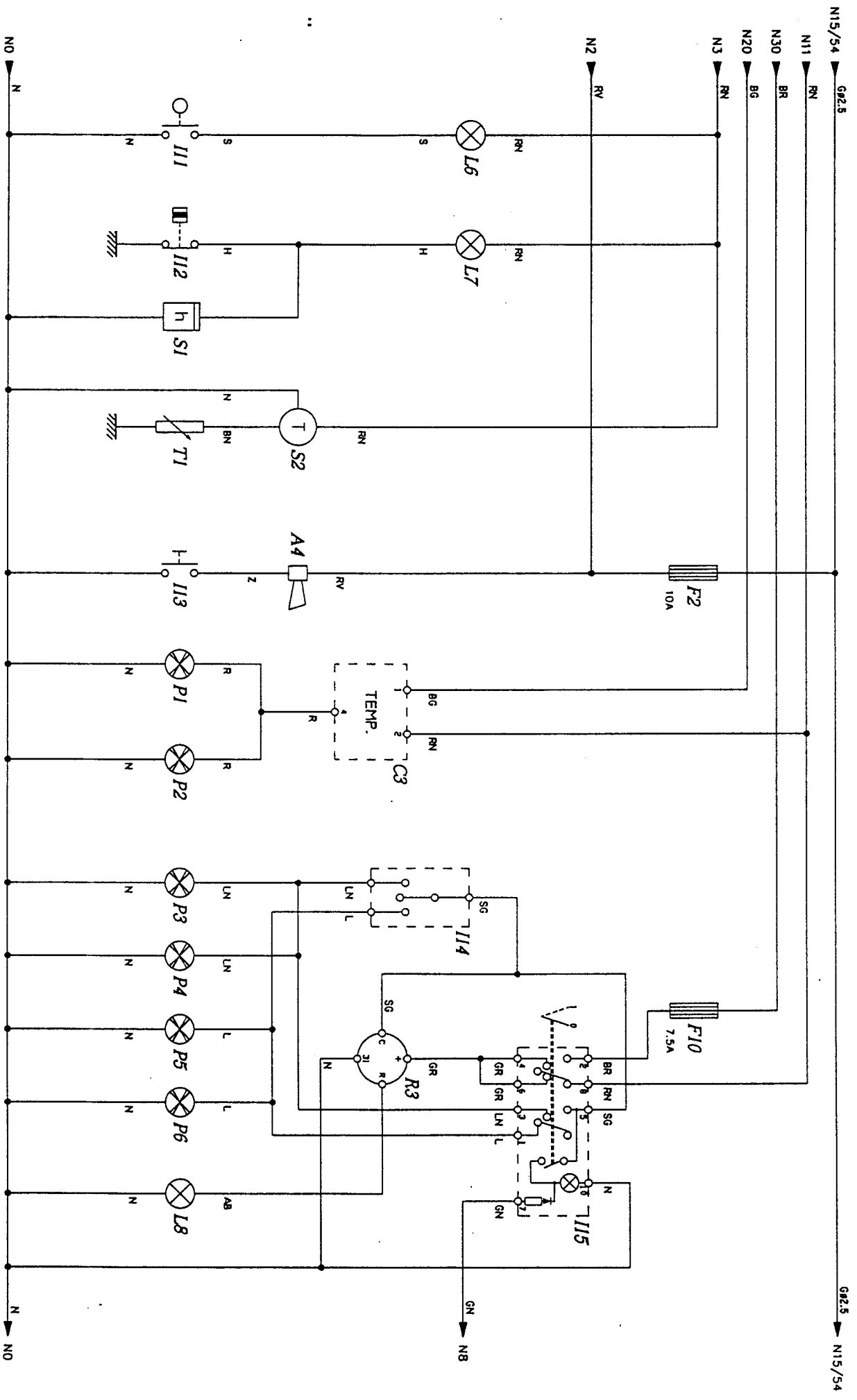
REF.	LEG.	CODE	Q.TY
71		01.40.00.0610	2
72		01.40.00.2360	2
73		00.03.01.0042	4
90		01.90.00.0286	1
91	dx	01.90.00.0287	1
92	C	01.90.00.0282	1
93	sx	01.90.00.0288	1
94		01.90.00.0472	1
95		00.96.05.2050	1
100		01.50F00.5000	1
101		01.50F00.5470	1
102		01.50F00.5480	1
103		00.83.09.0020	2
104		01.50F00.5490	1
108		01.50F00.5700	1
109		00.92.06.0250	1
112		00.68.02.0050	4
113		00.11.01.1000	0,4
114		01.50F00.3171	1
115		00.72.00.0230	2
116		00.92.07.0240	2
117		00.68.01.0050	4
118		01.50F00.3350	1
119		01.50F00.5063	1
120		00.592.05.1070	4
121		00.68.08.0170	4



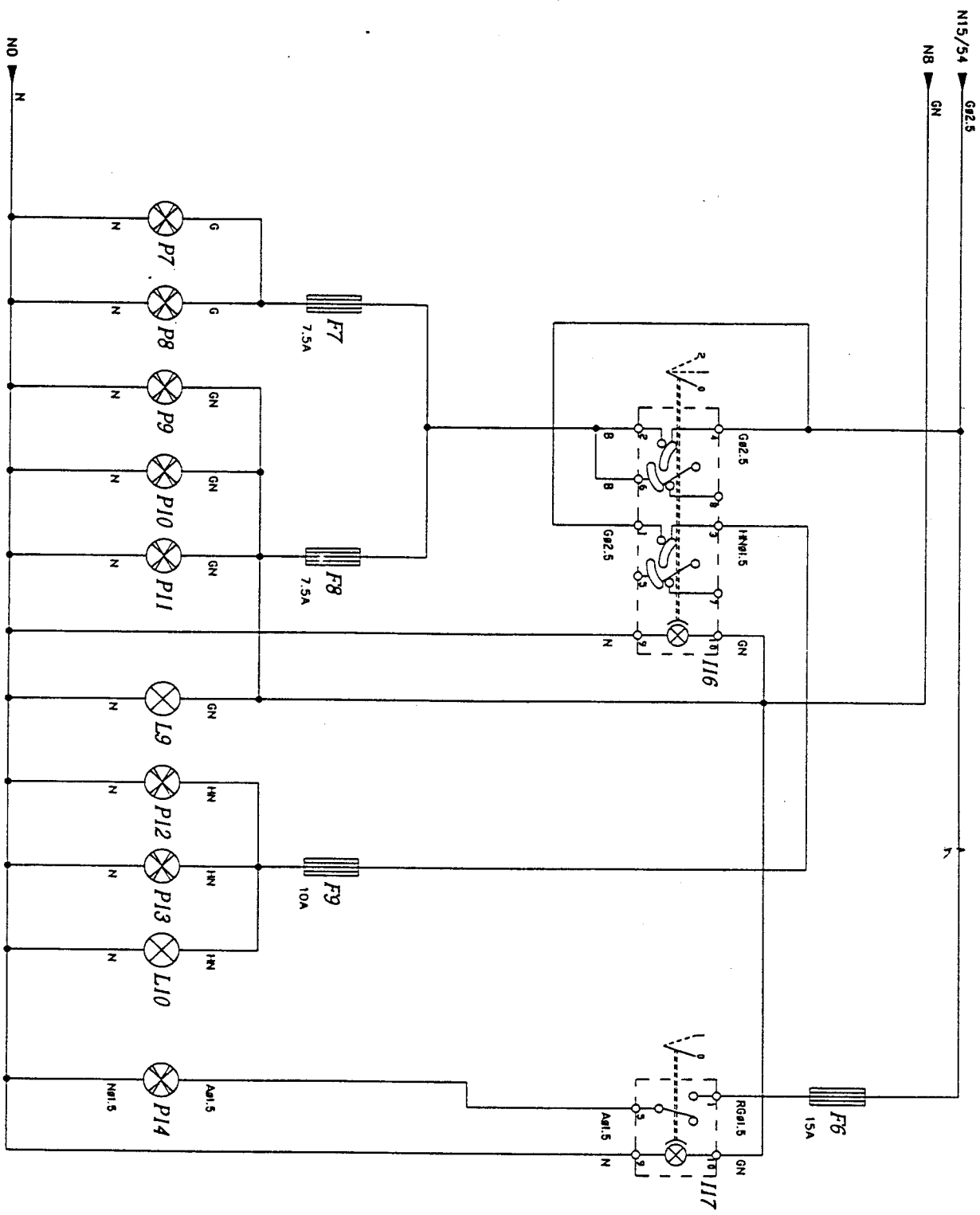
1	2	3	4	5	6	7	8	9	10	11	12	13	14	15	16	17	18	19				
DISCENO N° : DIS911					VS. CODICE :		CAD :		LAVORAZIONE :		INTERNA								FOGLIO 1		SECUS 2	
IMPIANTO : RASARBA MOT. LOMBARDINI ED OMIOLOG. STRAD.					NS. CODICE : GF081		M-F. FILE : DIS11		DENOMINAZIONE : SCHEMA ELETTRICO													
DISCENATORE : MELOTTI GIACCARLO					ESECUTORE : MELOTTI G.		ARCHIVIO :		DATA : 17-04-1997		ACC. :											



1	2	3	4	5	6	7	8	9	10	11	12	13	14	15	16	17	18	19			
DISCENO N. : DIS911					VS. CODICE : NS. CODICE : QF031					CAD : SPAC80					LAVORAZIONE : INTERNA						
IMPIANTO : BASERBA NOT. LONBARDINI ED OMLOGO. STRAD.					ESECUTORE : MELOTTI G.					M-F. FILE : DIS911					DENOMINAZIONE : SCHEMA ELETTRICO						
DISSEGNAIORE : MELOTTI GIANCARLO					ARCHIVIO :					DATA : 17-04-1997					ACC. :						
																		FOGLIO	2	SECUR	3



1	2	3	4	5	6	7	8	9	10	11	12	13	14	15	16	17	18	19	
DISCENO N° : DIS911		VS. CODICE :		CAD :		LAVORAZIONE :		DISCENO N° : DIS911		DENOMINAZIONE :		FOGLIO		S		S		4	
INPIANTO : RASABRIA MOT. LOMBARDINI ED OMOLON. STRAD.		NS. CODICE : GR.081		N°-FILE : DIS911		INTERNA		ESECUTORE : MELOTTI G.		SCHEMA ELETTRICO		3		S		S		4	
DISCENATORE : MELOTTI GIANCARLO		ESECUTORE : MELOTTI G.		ARCHIVIO :		DATA : 17-04-1987		ACC. :											



1	2	3	4	5	6	7	8	9	10	11	12	13	14	15	16	17	18	19
DISCNO Nr. : DIS911					VS. CODICE :		CAD :		LAVORAZIONE :		DENOMINAZIONE :		DATA :		ACC. :		FOGLIO	
IMPIANTO : RASERBA MOT. LOMBARDINI ED OMOLOO. STRAD.					NS. CODICE : QF031		N°. FILE : DIS11		INTERNA		SCHEMA ELETTRICO		17-04-1997		/		4	
DISCIGNATORE : MELOTTI GIANCARLO					ESSECUTORE : MELOTTI G.		ARCHIVIO :											

**LEGENDA UTILIZZATORI
IMPIANTO ELETTRICO
RASAERBA MOTORE LOMBARDINI
ED OMOLOGAZIONE STRADALE
(Riferimento disegno n.911)**

- A1 . Cicalino bilonale retronarcia/cesto alzato (tav.2)
- A2 . Avvisatore acustico allarme alla temperatura acqua motore e marcia innestata con freno di stazionamento inserito (tav.2)
- A3 . Cicalino cesto pieno (tav.2)
- A4 . Avvisatore acustico (tav.3)
- B1 . Batteria 12 Volt (tav.1)
- C1 . Regolatore di corrente (tav.1)
- C2 . Centralina termovaviatore (tav.1)
- C3 . Temporizzatore luci di arresto (tav.3)
- D1 . Diodo 4A (tav.2)
- E1 . Elettrovalvola arresto motore (tav.2)
- F1 . Fusibile 15A : A disposizione (tav.1)
- F2 . Fusibile 10A : Avvisatore acustico (tav.3)
- F3 . Fusibile 5A : Strumentazione (tav.1)
- F4 . Fusibile 10A : Arresto motore + cicalino bilonale + cicalino cesto pieno + avvisatore acustico di allarme (tav.2)
- F5 . Fusibile 15A : Motore cesto (tav.2)
- F6 . Fusibile 15A : Lampada rotante (tav.4)
- F7 . Fusibile 7.5A : Luci di posizione anteriore destra e posteriore sinistra (tav.4)
- F8 . Fusibile 7.5A : Luci di posizione anteriore sinistra, posteriore destra e luce targa + illuminazione interruttori (tav.4)
- F9 . Fusibile 10A : Luci anabbaglianti (tav.4)
- F10 . Fusibile 7.5A : Luci di emergenza (tav.3)
- F11 . Fusibile 10A : Indicatori ottici + luci di direzione + luci di arresto (tav.1)
- F12 . Fusibile 15A : Regolatore di corrente (tav.1)
- G1 . Dinamotore (tav.1)
- I1 . Termocontatto centralina termovaviatore (tav.1)
- I2 . Pressostato filtro aria intasato (tav.1)
- I3 . Microinterruttore retronarcia inserita (tav.2)
- I4 . Termocontatto massima temperatura acqua motore (tav.2)
- I5 . Microinterruttore marcia in folle (tav.2)
- I6 . Microinterruttore freno di stazionamento (tav.2)
- I7 . Microinterruttore cesto alzato (tav.2)
- I8 . Microinterruttore sedile (tav.2)
- I9 . Microinterruttore presa di forza (tav.2)
- I10 . Microinterruttore cesto pieno (tav.2)
- I11 . Contatto di livello riserva combustibile (tav.3)
- I12 . Pressostato bassa pressione olio motore (tav.3)
- I13 . Pulsante avvisatore acustico (tav.3)
- I14 . Selettore luci di direzione (tav.3)
- I15 . Interruttore luci di emergenza (tav.3)
- I16 . Interruttore luci (tav.4)
- I17 . Interruttore lampada rotante (tav.4)
- Key . Commutatore chiave avviamento (tav.1)
- L1 . Indicatore ottico carica batteria (tav.1)
- L2 . Indicatore ottico termovaviatore (tav.1)
- L3 . Indicatore ottico filtro aria intasato (tav.1)
- L4 . Indicatore ottico massima temperatura acqua motore (tav.2)
- L5 . Indicatore ottico freno di stazionamento inserito (tav.2)
- L6 . Indicatore ottico riserva combustibile (tav.3)
- L7 . Indicatore ottico bassa pressione olio motore (tav.3)
- L8 . Indicatore ottico luci di direzione (tav.3)
- L9 . Indicatore ottico luci di posizione (tav.4)
- L10 . Indicatore ottico luci anabbaglianti (tav.4)
- M1 . Motorino avviamento motore (tav.1)
- M2 . Motore cesto (tav.2)
- P1 . Luce di arresto posteriore sinistra (tav.3)
- P2 . Luce di arresto posteriore destra (tav.3)
- P3 . Luce di direzione anteriore sinistra (tav.3)
- P4 . Luce di direzione posteriore sinistra (tav.3)
- P5 . Luce di direzione anteriore destra (tav.3)
- P6 . Luce di direzione posteriore destra (tav.3)
- P7 . Luce di posizione anteriore destra (tav.4)
- P8 . Luce di posizione posteriore sinistra (tav.4)
- P9 . Luce di posizione anteriore sinistra (tav.4)
- P10 . Luce di posizione posteriore destra (tav.4)
- P11 . Luce targa (tav.4)
- P12 . Luce anabbagliante anteriore sinistra (tav.4)
- P13 . Luce anabbagliante anteriore destra (tav.4)
- P14 . Lampada rotante (tav.4)
- R1 . Relè motore cesto (tav.2)
- R2 . Relè consenso avviamento (tav.1/2)
- R3 . Intermitenza (tav.3)
- R4 . Relè arresto motore (tav.2)
- S1 . Strumento contaore (tav.3)
- S2 . Strumento temperatura acqua motore (tav.3)
- TR . Termovaviatore (tav.1)
- TI . Trasmettitore temperatura acqua motore (tav.3)

LEGENDA COLORI

A : azzurro	H : grigio	R : rosso
B : bianco	L : blu	S : rosa
C : arancio	M : marrone	V : verde
G : giallo	N : nero	Z : viola

Esempi : ABφ0.5 = azzurrobianco sez. 0.5 mm²
 AB = azzurrobianco sez. 1 mm²

ELECTRICAL SYSTEM**DIESEL MOD. – LOMBARDINI ENGINE AND TRAFFIC LIGHTS KIT**

A1	Reverse – collector up buzzer (tav. 2)
A2	High temperature engine water and gear engaged with parking brake on horn (tav. 2)
A3	Full grass collector buzzer (tav. 2)
A4	Horn (tav. 3)
B1	Battery – 12 volts (tav. 1)
C1	Tension adjuster (tav. 1)
C2	Thermal starter unit (tav. 1)
C3	Stop lights timer (tav. 3)
D1	4A diode (tav. 2)
E1	Engine stop solenoid (tav. 2)
F1	15A fuse: available (tav. 1)
F2	10A fuse: horn (tav. 3)
F3	5A fuse: instrument (tav. 1)
F4	10A fuse: engine stop + buzzer + full grass collector buzzer + alarm horn (tav. 2)
F5	15A fuse: grass collector motor (tav. 2)
F6	15A fuse: turning lamp (tav. 4)
F7	7,5A fuse: right side light and left tail light (tav. 4)
F8	7,5A fuse: left side light and right tail light and plate light + switches lights (tav. 4)
F9	10A fuse: traffic beams (tav. 4)
F10	7,5A fuse: emergency lights (tav. 3)
F11	10A fuse: optical indicators + direction lights + stop lights (tav. 1)
F12	15A fuse: tension adjuster (tav. 1)
G1	Dynamotor (tav. 1)
I1	Thermal starter unit thermal contact (tav. 1)
I2	Air filter clogging pressure switch (tav. 1)
I3	Reverse engaged microswitch (tav. 2)
I4	Max temperature engine water thermal contact (tav. 2)
I5	Neutral microswitch (tav. 2)
I6	Parking brake microswitch (tav. 2)
I7	Collector up microswitch (tav. 2)
I8	Seat microswitch (tav. 2)
I9	PTO microswitch (tav. 2)
I10	Full grass collector microswitch (tav. 2)
I11	Fuel stock level contact (tav. 3)
I12	Engine oil low pressure switch (tav. 3)
I13	Horn pushbutton (tav. 3)
I14	Direction lights selector (tav. 3)
I15	Emergency lights switch (tav. 3)
I16	Lights switch (tav. 4)
I17	Turning lamp switch (tav. 4)
KEY	Starter key (tav. 1)
L1	Battery charge indicator (tav. 1)
L2	Thermal starter indicator (tav. 1)
L3	Clogged air filter indicator (tav. 1)
L4	Max engine water temperature indicator (tav. 2)
L5	Parking brake on indicator (tav. 2)
L6	Fuel stock indicator (tav. 3)
L7	Engine oil low pressure indicator (tav. 3)
L8	Direction lights indicator (tav. 3)
L9	Side lights indicator (tav. 4)
L10	Traffic beams indicator (tav. 4)
M1	Starter motor (tav. 1)
M2	Grass collector motor (tav. 2)
P1	Left back stop light (tav. 3)
P2	Right back stop light (tav. 3)
P3	Left front direction light (tav. 3)
P4	Left back direction light (tav. 3)
P5	Right front direction light (tav. 3)
P6	Right back direction light (tav. 3)

P7 Right side light (tav. 4)
P8 Left tail light (tav. 4)
P9 Left side light (tav. 4)
P10 Right tail light (tav. 4)
P11 Plate light (tav. 4)
P12 Left front traffic beam (tav. 4)
P13 Right front traffic beam (tav. 4)
P14 Turning lamp (tav. 4)
R1 Grass catcher motor relay (tav. 2)
R2 Starter enabling relay (tav. 1/2)
R3 Intermittent light (tav. 3)
R4 Engine stop relay (tav. 2)
S1 Hourmeter (tav. 3)
S2 Engine water temperature instrument (tav. 3)
TR Thermal starter (tav. 1)
T1 Engine water temperature transmitter (tav. 3)

COLOURS

A: pale blue	H: grey	R: red
B: white	L: blue	S: pink
C: orange	M: brown	V: green
G: yellow	N: black	Z: violet